



Employment

1819 Aberg Avenue ■ Madison, WI 53704-4201

& Training Association, Inc.

(608) 242-7402

Since 1966 the Employment & Training Association (EATA) has been committed to providing employment and training services in a way that preserves personal dignity, considers individual needs and differences, and supports individuals and their families.

We hope these job leads help you with your employment goals! Good Luck!

EATA staff

JOB LEADS 03/19/2025

www.madison.craigslist.org

WINDOW INSTALLERS NEEDED! ENTRY LEVEL WELCOME! (Madison and surrounding areas)

compensation: 15 PER HOUR STARTING\ **employment type:** full-time\ **job title:** crew members

Window Installer. Loading projects into trailers each morning. Prepping job site Installing windows and doors (mostly residential remodel) Finishing out trim work on the inside and custom cladding the exterior. Cleaning project area up

Window installation is a great career. We are searching of people who enjoy being outside, works well with others and want to succeed.

Rides to and from shop (so you aren't wasting gas) paid lunches, short term disability, and overtime pay!

Job Type: Full-time Pay: \$15.00 - \$25.00 per hour

Please email resume to 35f4f721ad3a3b65b7774b56af507e22@job.craigslist.org

Experienced Cement Finishers (madison)

compensation: Union wage package\ **employment type:** full-time\ **job title:** Journeyman Cement Masons

Union masonry contractors in Wisconsin are looking for experienced Cement Masons. Great wages, healthcare, pensions & more are available! MUST BE WILLING TO TRAVEL. Please click the link provided to fill out a form and a representative will contact you directly! <https://form.jotform.com/230797042370152>

Day or Evening Bartenders - Schwoegler's (Madison)

Schwoegler Park Towne Lanes

compensation: Hourly plus tips. Hourly pay based on experience\ **employment type:** employee's choice\ **job title:** Bartender

Schwoegler's is looking for a couple fun customer service minded individuals to join our team. If your looking to have a FUN full or part-time job please come join our team! We are a busy fun bowling centers with great customers. Tips are very good every day of the week regardless of day or evening shifts.

Please email resume to c08138c44d473d4484f9b94d69875036@job.craigslist.org



Service/Measure Technician

1-800 Hansons

compensation: \$22-\$25\ **employment type:** full-time\ **experience level:** mid level\ **job title:** Service/Measure Technician

Grow with us! 1-800 Hansons is a top ranked home improvement company that is continuously growing and expanding!

We are looking for individuals who want to learn the business and receive the guidance to continue to advance within the company!

1-800-HANSONS, LLC is looking for a skilled Service & Measure Technician to join our team in Madison, WI.

The Service & Measure Technician is responsible for traveling to customer homes and completing window measures for newly sold jobs, as well as completing small repair services on past windows, roofing, siding and gutter jobs.

This job is ideal for someone with a construction background, with experience installing windows and roofs.

What We Offer:

Full time hours

Hourly pay of \$22-\$25/hour

Overtime opportunities

Eligible for Health Benefits at 30 Days of Employment (Medical, dental, vision, life insurance, accident, long term and short term disability)

Paid Time Off

Holiday Pay

Company vehicle and gas card

What You'll Do:

Take accurate precise measures of windows for residential homes

Enter accurate data into a software application

Complete light services on previous installations that are needed on roofing, siding, windows, gutters, gutter protection and insulation on residential homes

Services can include: replacing sashes, screens, completing interior work, caulking.

Responsible for the proper and safe residential at-home installation/execution of products and services when services are needed on a previously installed job

Utilize necessary tools for making repairs and/or adjustments to all items

Inspect products and materials for defects, proper sizes, and potential malfunctions prior to installation

Provide excellent customer service to the homeowners/customers

Keep paperwork organized and track any notes that need to be taken during the service

Responsible for managing the warehouse; inventory, organize, pull orders for installations and at times make deliveries of materials to jobsites

What We Require:

2 years of professional experience installing windows, roofing, siding, gutters, gutter protection and insulation

Valid driver's license with clean driving record

Basic computer skills with an ability to use a software application to enter data

Positive attitude as well as excellent communication skills

Great math skills

Must have excellent customer service

Attention to detail

Must be able to stand for prolonged periods

Must be able to move items weighing up to 50 pounds

Must be able to climb a ladder and work roof heights

Must be able to communicate effectively with staff, customers, vendors, and the public

Hours/Schedule:

Full-time, 40 hours per week/52 weeks per year. Standard hours are M – F, 8:00 – 5:00 but some overtime including evening and weekend hours may be required to complete projects under deadlines.

Please email resume to bd5403954a043d7480b6a1d4e99105c1@job.craigslislist.org



Class A CDL driver/asphalt labor (Wis dells)

Get it done paving

compensation: Up to 300 per day\ **employment type:** full-time\ **experience level:** senior level\ **job title:** Class A CDL driver/asphalt laborer

Looking to hire class a CDL drivers with clean record and experience

Some trucks are automatic and some are manual Driver is responsible for cleaning out the inside of the truck daily taking proper care and doing pre-trip every morning

Also looking for Asphalt laborers

Please text 920-522-2491 Joe.

SEASONAL COOK - now hiring! (Lodi)

Crystal Lake Campground

compensation: \$20-\$25/hr\ **employment type:** part-time\ **experience level:** entry level\ **job title:** Cook

Looking to make some extra money this summer! Crystal Lake Campground is now hiring. We are looking for a seasonal cook for the bar/grill. Open Thursday - Monday. Must be 18 years or older. Paying \$20-\$25/hr based on experience. Weekends and holidays requires.

Please call or text to set up your interview! 239-826-1208

MASON (Madison)

compensation: Hourly pay based on experience\ **employment type:** full-time\ **job title:** Mason

T.S. Masonry, Inc. is looking to add experienced top tier BRICK, STONE and BLOCK MASONS to our team. We have been in business for 28 years doing residential and light commercial work.

Valid DL a must. Hourly rate depends on experience. Benefits include: EMPLOYER PAYS 50% OF medical insurance, earn up to 6 1/2 days of vacation per year, 401 K program, dental and vision benefits (employee paid). Paid holidays.

Work hours are Monday - Friday 7am -3:30pm.

Please email tanya@tsmasonry.net for an application or call us at 608-845-5809.

We look forward to hearing from you and thank you for considering T.S. Masonry, Inc. for employment.

Mosquito Applicator (Wisconsin Dells)

Mosquito Authority

compensation: \$17.00 Hr +++\ **employment type:** full-time\ **experience level:** entry level\ **job title:** Mosquito Applicator

Are you passionate about hard work and committed to improving the lives of others? Do you thrive in a supportive environment and love working outside? Then you are a perfect fit for our team!

As a Mosquito Control Specialist at Mosquito Authority, you will use proven mosquito-control products and techniques on both commercial and residential properties.

Our Mosquito Control Specialists provide expert mosquito control in a friendly, respectful, and efficient manner. If you're dedicated to impeccable client service and enjoy physical work, this is a great opportunity for you.

Please email resume to aa83cf7430083662a2ef635745e5947e@job.craigslist.org



Boat Club Crew Member (\$15/hr) - 2025 Boating Season (Madison)
Capitol Boat Club

compensation: \$15/hr plus tips paid weekly\ **employment type:** employee's choice\ **experience level:** no experience required\ **job title:** Crew Member

POSITION OVERVIEW We are seeking fun, energetic, and hardworking individuals to join our team as Crew Members. Positions are part-time, but may reach full-time hours during the busiest part of the season. What does a Crew Member do? Let's dive in!

ESSENTIAL FUNCTIONS

- Uncover/cover, clean, fuel, and move boats as part of opening, closing, and preparing for reservations
- Perform equipment checks to make sure all necessary equipment is on board per reservations details
- Manage the pre-departure and post-return process using a handheld tablet or smartphone
- Welcome, assist, and provide excellent customer service to all members and rental customers during all interactions
- Communicate safety information and provide training for members and renters according to company policies and procedures
- Be (or become) knowledgeable about the lake, it's landmarks, and points of interest in order to provide basic guidance to members
- Clean and maintain boats and company property according to company standards and schedules
- Perform or assist management with basic boat maintenance and repairs
- Work with other Crew Members in a team environment to ensure excellent customer service and the completion of all required tasks
- Ensure personal appearance is clean and professional
- Follow all company policies and procedures
- Maintain confidentiality of proprietary information
- Perform other reasonable job duties as requested by management
- Work outside in the elements and stand for an extended period of time
- Complete the state-sponsored Boating Safety Course

WHY CAPITOL BOAT CLUB?

- Generous hourly rate of \$15.00 per hour plus tips – paid weekly
- Flexible, non-traditional schedule
- Work that provides variety and is outside by the water #LakeLife
- Discounted boat rentals
 - Half Day - \$50.00 + fuel & accessories
 - Full Day - \$100.00 + fuel & accessories
- Great management team that is fun and easy to work with

ABOUT YOU

- Availability (this is a big one):
 - We are open 7 days a week, from roughly 7:00am - 9:00pm, May through October, with the busiest months being June, July, and August. You must be available to work during these months with extremely limited time off.
 - Start dates for the positions are somewhat flexible, but we are aiming to onboard and train from late-April through mid-June.
 - Holiday, weekend and weekday afternoon/evening availability is a must-have as this is when most members and renters make reservations.
 - Schedules are based on reservations and reservations are dictated by the weather, so you must be flexible and understanding about short-notice schedule changes.
- At least 18 years of age
- High school degree
- Be able to pass a criminal background check
- Valid driver's license and a personal vehicle (**highly preferred**)
- Comfortable operating or learning to operate boats (**prior experience is highly preferred, but not required. We can teach you to operate a boat.**)
- Strong communication and customer service skills
- Ability to manage and complete multiple tasks during periods of high activity
- Ability to read and manipulate handheld tablets/smartphones
- Ability to bend, kneel, balance, and carry equipment up to 50 pounds

APPLY FOR THIS POSITION: <https://www.capitolboatclub.com/crew-member>



Maintenance Technician - The Point Apartments, 191 units
Horizon Management Services

compensation: 22-28\ **employment type:** full-time

Position Overview:

The Maintenance Technician will play a crucial role in ensuring the smooth operation and maintenance of 191 studio/one bedroom units on the eastside of Madison. This property has been recently renovated and is currently being leased up. This role will also provide support to our properties in Janesville, WI as needed, including covering vacations, handling overflow work, and special projects. This position is responsible for performing a variety of maintenance tasks, including repairs, preventative maintenance, and renovations to keep our apartment buildings in top condition. This position will work with vendors for warranty, as appropriate and as needed. The ideal candidate will have a strong background in building maintenance, excellent problem-solving skills, and a commitment to providing exceptional service to our residents.

General Maintenance:

- Perform routine maintenance tasks, including plumbing, electrical, HVAC, carpentry, and painting.
- Diagnose and repair issues in apartments and common areas promptly and efficiently.
- Conduct regular inspections of building systems and equipment to identify and address potential issues.
- Collaborate with contractors and other team members to complete projects on time and within budget.

Preventative Maintenance:

- Implement and follow a preventative maintenance schedule to extend the life of building systems and equipment.
- Keep detailed records of maintenance activities and repairs.
- Monitor and maintain inventory of maintenance supplies and equipment.

Emergency Repairs:

- Respond to emergency maintenance requests promptly and effectively.
- Be available for on-call duties as required to address urgent maintenance issues.

Resident Relations:

- Provide excellent customer service to residents, addressing maintenance requests and concerns in a friendly and professional manner.
- Communicate effectively with property management and residents regarding maintenance issues and resolutions.

Safety and Compliance:

- Ensure all maintenance work complies with local building codes, safety regulations, and company policies.
- Maintain a clean and safe work environment, following all safety procedures and guidelines.
- Participate in safety training and meetings as required.
- High school diploma or equivalent; technical school or vocational training in building maintenance or a related field preferred.
- Minimum of 5 years of experience in apartment maintenance, building maintenance, or a related field.
- Strong knowledge of plumbing, electrical, HVAC, carpentry, and general building systems.
- Ability to use hand tools, power tools, and diagnostic equipment.
- Excellent problem-solving skills and attention to detail.
- Strong communication and customer service skills.
- Ability to work independently and as part of a team.
- Valid driver's license and reliable transportation.
- Availability for on-call and emergency maintenance duties.

Please email resume to 4fb994ab24c03913ad4e480822c999b0@job.craigslist.org

NOW HIRING FOR LANDSCAPE SEASON; TL LANDSCAPE, LLC

compensation: \$18-\$26/ hr\ **employment type:** full-time\ **experience level:** mid level\ **job title:** Landscape Professional

We are currently hiring for the upcoming 2025 landscape season! Positions include operator, general laborer and lawn mowing professionals. Great pay, great team and management that truly cares!

Apply today! <https://www.tlscapes.com/apply-now>



PART-TIME, EARLY EVENING IN-HOME CAREGIVERS NEEDED (Western Sun Prairie near Madison border)

compensation: \$20-\$23/hour to begin, potential to increase to \$24-\$25/hour with earned raise (good pay, good boss)\ **employment type:** part-time\ **job title:** In-Home Caregiver

Part-Time, Early Evening In-Home Caregivers Needed

SALARY: \$21-23/hour (good pay, good boss)

SCHEDULE:

- Monday through Friday, 4:00-800pm (hours have some flexibility)
- Every other weekend, 10:00am-6:00pm (hours have some flexibility)

ROUTINES: • The afternoon schedule involves any of the following:

- help with stretching and strengthening, light housework, light cooking and feeding, positioning pillows for sleep.

ABOUT YOU:

- you are physically healthy and strong,
- you have a valid driver's license and insurance,
- you have personal reliable transportation, and,
- you prefer long-term commitments.

ABOUT ME:

I am an easy to get along with (most of the time) 70-year-old woman who became quadriplegic 12 years ago. I am mostly paralyzed from the neck down. My brain continues to refuse to accept that I can no longer engage in my pre-injury activities. Luckily, I am happy to do anything involving movement like strengthening and stretching. I thrive on humor and laughing. I hope you do too!

Please seriously consider helping me. You will be helping one person who genuinely needs your help.

SEND ME THESE TWO THINGS:

- 1) why you think you would be a good fit for this position
- 2) a resume, OR detailed description of previous work experience to 825f9033851936d88e7ae851f06f67b9@job.craigslist.org

Lawn & Landscape Maintenance Crew Member

Hamacher Lawn Care Services

compensation: Based on experience - negotiable. Fair and competitive wages\ **employment type:** full-time\ **job title:** Lawn Care Team Member

Due to rapid growth, we are looking to hire one or possibly two more employees. Looking for a career change...now is the time to join our team! Starting pay - \$20/hr+++ based on experience. Hiring for full or part time positions.

This position includes tasks such as:

- Lawn mowing utilizing top of the line equipment
- Lawn trimming and edging
- Bush and hedge trimming and pruning
- Fall cleanups
- Snow plowing

Requirements of this role include:

- Clean driving record
- Customer service mindset
- Team player, reliable and trustworthy
- Able to lift 50+ pounds on occasion
- Able to operate commercial grade mower (training available)
- Able to operate snow plow equipment (training available)
- Comfortable driving a truck with a trailer

Benefits include (after 90 days): - Medical and dental insurance- Paid vacations - 401K

Please call 608-212-8919 Matt.



Interviews Today \$ 17-20 to start! (Madison Area)

compensation: \$ 17-20\ **employment type:** full-time\ **job title:** Assembly/Production

We're adding to our team on 1st, 2nd and 3rd shift. Positions include; assembly, general warehouse and shipping. \$17.00-20.00/hr to start. Excellent benefits and incentives offered after probationary period. Wage increases offered based on skill/shift \$ 20-23 after completion of probationary timeframe. ***Weekly attendance incentives***

Apply at:
672 West Washington Ave
Madison, WI 53703

Weekend Home Health Aide Wanted (Madison)

compensation: \$22/hour\ **employment type:** part-time\ **job title:** Weekend healthcare for Person with a Disability

I'm looking for someone to work Saturday and/or Sunday every other weekend from 7:00 AM to 1:00 PM. Employees will be paid \$22/hour. I have high-level quadriplegia and require assistance getting out of bed into a wheelchair as well as several other morning tasks. I can give more details if you contact me. Potential employees would be hired through IRIS SDPC. Experience with Home Health Care and/or other quadriplegics is a bonus, but not a requirement. Applicants should have good job references and be diligent and responsible. Looking for someone to start immediately. Thank you.

Please text 608-239-0264.

General Technician (Madison)

Hansen's Auto

compensation: 20-23\ **employment type:** full-time\ **experience level:** entry level\ **job title:** General Technician

Job Description:

Compensation varies on experience

Hansen's Auto Service Center has an IMMEDIATE opening for a General Service Technician, in Madison, Wisconsin.

We are a family-owned business since 1984 and have over 100 years of combined experience.

Hansen's Auto is a professional, well-respected shop.

We are honest and stand behind our work.

Our shop is well-tooled and has a very friendly, efficient and strong support staff.

We believe in being a "team" to get the job done!

Your job mainly would be responsible for Oil Changes, Tire Mounting & Balancing, Tire Rotations & Repairs, Exhaust Work, and Vehicle Inspections. Other jobs may be required include shop maintenance, inside and outside of our buildings.

This job is hourly, based on experience. The hours would be from 7:30am - 4:30pm, Monday through Friday.

NO WEEKENDS!

But there may be some overtime required to meet the needs of the business, from time to time.

We have paid holidays and vacation time, provide and clean our uniforms, Pay for ASE certification and ongoing training.

Your role requires both strategic thinking and attention to detail.

We are looking for someone who is highly motivated, reliable, and has a positive attitude.

A clean driving record AND a valid driver's license is a must.

Basic hand tools are a plus, but not required.

Join our team!!

Please call 608-256-0713 John Hansen.



Framers

compensation: Boe\ **employment type:** full-time\ **job title:** Framers

Framers wanted. Work Monday thru Friday 7-4. Benefits after 90 days. Must have reliable transportation and pouches. Year round work. We build custom homes. **You reach Bob with Accurate custom construction at608-514-5551**

Shipping Clerk

QPS Employment Group

compensation: \$18.00 – \$20.00/hour\ **employment type:** full-time\ **experience level:** entry level\ **job title:** Shipping Clerk

Position Title: Shipping Clerk

Wage: \$18.00 – \$20.00/hour

We're partnering with a leading company in Madison, WI to bring you a range of warehouse positions. All shifts are hiring! Find your perfect fit — apply today.

Shipping Clerk Responsibilities:

- Package product for shipping
- Load and unload trucks
- Operate forklift and pallet moving equipment in accordance with company policies, procedures, and safety standards
- Verify incoming material against bill of lading
- Create shipping paperwork
- Exercise responsibility for the prevention of loss or damage of assigned equipment, company properties, and customer material
- Notify supervisor of any problems that will affect quality or scheduled delivery times
- Coordinate shipping arrangements with customers and trucking firms
- Deliver materials to appropriate location on plant floor

QPS Employment Group is a full-service staffing firm comprised of dedicated and passionate people with over 50 offices throughout the United States. We place great people with great companies in industrial, skilled trades, administrative, manufacturing, general labor and professional employment. Hiring immediately!

Why Work with QPS?

- Access to sought-after positions with leading employers
- Dedicated placement specialists who will guide you through every step of the job search process

Please email resume to 7902cad50caf3f20b9578e1379ea10c2@job.craigslist.org

Delivery Driver \$21-22hr --IMMEDIATE! (Madison)

compensation: \$21-22 hr OT after 40\ **employment type:** full-time\ **job title:** Delivery Driver

Non CDL Delivery Driver needed local work, delivering doors, frames and hardware to contractors and warehouses. Will be driving an automatic straight truck.

Must have DOT med card or willing to get one.

Driver will load/unload using a forklift. Product will need to be secured in the trucks. The Driver will work full time, Monday-Friday on day shift. 7am-3:30pm with some OT \$21-22hr

Please have 6 months minimum box/straight truck delivery experience.

Weekly Pay

direct deposit

Benefits

Please email resume to 0a9077c829093a4dac9231b187702d01@job.craigslist.org



Framing Positions Open. (Dane)

Modern Builders

compensation: Hourly Wages and Bonuses \$22.00-\$30.00 depending on experience.\ **employment type:** full-time\
experience level: no experience required\ **job title:** Rough Framers

We are now hiring for Residential Rough Framers we are a small business with lots of drive, experience in the trades is great, but not required, not opposed to training. We work all year round in the elements, as we all know Wisconsin weather is just part of the daily life of the Trade. We work Monday-Thursday 6:45-5:00 and Friday 6:45-2:15 off every weekend. Competitive wages and bonuses. We work all throughout the Dane County Area.

(Waunakee, Verona, Fitchburg, Madison, Mc Farland, East Side Madison, Sun Prairie)

Please email resume to modernbuildersdj@gmail.com

Electricians, Roofers, Handymen Wanted - Start Tomorrow! (Madison Area)

RDCL Services

compensation: \$95/job (avg. with travel)\ **employment type:** employee's choice\
experience level: no experience required\
job title: Solar Site Survey Technician

IF YOU NEED SIDE WORK, WE HAVE A FLEXIBLE, HIGH-PAYING SIDE GIG FOR YOU!

We operate in over 25 states and we now need someone in the Madison area who can perform pre-booked solar "site surveys" on homes (site surveys include taking measurements and photos of roofing, electrical, attics, etc. for the solar design process).

Think of us as the Uber for solar installation companies and insurance providers.

We'll train you (2 hour training). Work is done in our app. And work is on your own schedule!

These gigs require a good smartphone, step ladder, basic tools, and a two-story ladder or (two 12' ladders) to assessing rooftops (only when safe). If you have this equipment, please read to the end

No sales allowed. No experience needed. It's the perfect high-paying side gig.

DETAILS:

- No solar experience needed (solar technicians, home inspectors, electricians, handymen, roofers, drone operators, photographers, and insurance adjusters are ideal)
- Get paid instantly when jobs are complete
- Jobs pay \$95 (avg with travel) and take 40 min (avg.) to complete
- You choose your schedule and service area and we send you jobs
- Opportunities to perform other tasks and service work

HOW TO JOIN OUR CREW

1) Visit www.rdclservices.com/join to apply and get instant approval (NO INTERVIEW NEEDED)

2) If you're instantly approved, invest 1.5 hours to watch the training videos

3) After the videos, we'll guide you to conduct a trial job your home (or someone's you know)

Once completed, YOU'RE DONE! We'll activate your account and you'll receive job notifications via text message.

First-come-first-serve on these 3 positions. Start the application process now and get paid gigs tomorrow!

*****(Visit www.rdclservices.com/join to learn more and get started. If you have technical issues getting started, please text 801. 901. 3643 for assistance)*****

ABOUT US

RDCL Services (pronounced radical) is a growing solar services company operating in 25 states. We look forward to having you join our team of 100's of friendly, reliable, and skilled men and women.

ABOUT YOU

If you've read this far, you are among the top 10%. Congrats! The onboarding process is all self-led because we are looking for only the most motivated people who pay attention to instructions and who can see tasks through from start to finish. If you've read this far, we want you on our team! Please register now at rdclservices.com/join to claim a spot.



Mechanic Needed (West Madison)

Penguin Auto

compensation: \$800-\$1000 per week depending on experience\ **employment type:** employee's choice\ **job title:** Auto Mechanic

Penguin Auto, a small family-owned business with a friendly work environment, is looking for an experienced mechanic with a positive attitude to join our team. Ready to start right away! This is a 1-month position with potential for permanent employment if both parties are happy. No English? No problem! Earn up to \$1000/week.

Call or text 608-282-5414 to apply today!

Diesel Tractor, Trailer Fleet Mechanic-Technician (Waunakee)

compensation: *TBD Based on Experience*\ **employment type:** full-time\ **job title:** Diesel Tractor, Trailer Fleet Mechanic-Technician

Diesel Tractor, Trailer Fleet Mechanic-Technician - Waunakee Hourly (based on experience/qualifications)

Essential Job Duties and Responsibilities:

- Safety checks on vehicles
- Truck engine maintenance; lube, oil, and filter
- Tire inspections and repairs
- Inspect, diagnose and repair electrical, hydraulic, suspension, brake and air systems on our vehicles and trailers.
- Respond to service calls for emergency breakdowns.
- Complete required paperwork, documenting parts usage, and accounting for repair times.
- Reviews and complete repairs identified on Driver Vehicle Inspection Reports.
- Maintains a clean, safe work area

Excellent benefits include:

- Health, dental, vision, insurance with Company contribution
- 401K with Company match
- Holiday/vacation pay
- Life Insurance/Short Term Disability Insurance

Please call 262-208-0090 Billy.

Food Service Assistant (Madison)

compensation: \$18/hr\ **employment type:** full-time\ **job title:** Food Service Assistant

On-Site Staffing Services is looking for individuals with culinary knowledge and experience Food Service Assistant to join their Dining & Culinary Services team out in the Madison, WI area to start as soon as August 25th.

REQUIREMENTS

- 1 Year of food production preferred (not required)
- Preferred (not required) SERV Safe Certification
- Company continues to follow necessary health and safety protocols to protect the company from COVID-19. All employees remain subject to the COVID-19 Workplace Safety Policy. Vaccination is not required.
- Must be able to pass a background and drug screening

REQUIREMENTS

- 1 Year of food production preferred
- Preferred SERV Safe Certification
- Must be able to pass a background and drug screening

If interested, please contact our office 414-383-7175 press 1 to speak to a recruiter.



Indeed.com

Warehouse Associate - job post National Oak Distrib, Inc.

704 Rolfsmeier Rd, Madison, WI 53713

\$18 an hour - Full-time

The Warehouse Associate is responsible for supporting warehouse operations accurately and efficiently. This position is frequently rotated and cross-trained through all warehouse functions as business needs dictate. Benefits include competitive pay rate, 100% company paid health insurance for employee, 401k, over three weeks paid time off and more! The job functions include, but are not limited to

- Picking - Determining bins or shelves location and picking product with a hand-held radio frequency (RF) scanner, ensuring accuracy and quantity by scanning barcodes: Placing and/or packing product into cartons or onto a pallet to provide damage-free shipment.
- Receiving - Unloading trucks, using a forklift, pallet-jack, electric pallet-jack, or by hand; verifying quantity ordered versus quantity received; checking all shipments against packing lists and for damage; marking stock items using identification tags; storing items in an orderly and accessible manner; moving materials and items to designated bins or shelves.
- Shipping - Preparing preliminary shipping documenting weight, piece count and freight classification of all products, determining the method of shipping on appropriate carries; marking and labeling according to Federal Hazardous Materials Regulations; scheduling shipments.
- Will Call - Interacting with customers in person; completing accurate and prompt fulfillment of orders.
- General - Cleaning and maintaining supplies, tools, equipment, and storage areas to ensure compliance with safety regulations; determining proper storage methods; examining and inspecting stock items for wear or defects, reporting any damage to manager.
- Physical Demands - The physical demands described here are representative of those that must be met by an employee to successfully perform the essential functions of this job. Reasonable accommodations may be made to enable individuals with disabilities to perform the essential functions. While performing the duties of this job, the employee is regularly required to stand; walk; use hands to finger, handle, or feel; reach with hands and arms; climb or balance; stoop, kneel, crouch, or crawl; talk, hear or smell, up to 8 hours per day. The employee is occasionally required to sit. The employee must regularly lift and/or move up to 50 pounds. Specific vision abilities by this job include close, distance and peripheral vision.

Experience Preferred 1 year(s): General Warehouse Experience

Education Preferred High School or better

General Laborer-Weekly Pay + Advancement Opportunities: Madison, WI-R29762 - job post TruGreen Limited Partnership

4626 Dutch Mill Road, Madison, WI 53716 \$20 an hour - Full-time

Every TruGreen associate is committed to quality. We all have an important role to play in the success of our company. There is no job too small or too great that doesn't equally impact our future.

We know there is no business without the people behind our brand that make it – and our services – a reality. You play a critical role in contributing to a high-performing team.

At TruGreen, we are committed to our customers, our teams, our values and the science of lawn care. A career with TruGreen is a career full of new opportunities to learn and take pride in your work.

#BeTruGreen and find yourself with a satisfying and rewarding career.

What's In it for YOU!

- A job that keeps it interesting—no two days are alike, and you get to work outside instead of inside a stuffy office
- Awesome teammates who are dedicated to our values, customers, lawn science, and YOU!
- Competitive wages* Average income is \$850 - \$1,200/week (based on an hourly rate and average bonuses earned for qualifying specialists meeting performance expectations)
- Affordable Health, Dental, and Vision Insurance Plans
- Financial health resources, including 401k
- Training & Development
- Paid Time Off/Sick Leave



Construction Laborer/Helper - job post Professional Testing Service Wisconsin

\$22 - \$25 an hour - Full-time

Laborer/Drilling Assistant position is an entry level position. Typical candidate will be required to assist the lead driller with drilling duties including lifting augers, lifting rods, logging samples, assisting the clients, etc... We are willing to train motivated individuals. This is a good skill to learn that will stick with you throughout life.

Requirements

- High School Diploma/GED
- Requires good driving record and valid driver's license.
- Must pass pre-employment drug screening test.
- Must be able to lift 50-80 pounds.

Additional Info

- Full-time position.
- Hours generally 7 AM to 5 PM.
- Position requires year round, outdoor work.
- Some overnight travel and Saturday hours.

Job Type: Full-time

Pay: \$22.00 - \$25.00 per hour

Expected hours: 30 – 50 per week

Benefits:

- Flexible schedule
- On-the-job training
- Opportunities for advancement

Schedule:

- 8 hour shift
- Monday to Friday
- Overtime
- Weekends as needed

License/Certification:

- Driver's License (Required)

Lawn and Landscaping Maintenance Technician - job post Breunig Lawn Care, LLC Madison, WI

\$17 - \$25 an hour - Part-time, Full-time

Salary: \$17.00 to \$24.00/hour based upon experience plus possible benefits

Pay Frequency:

- Bi weekly or Twice monthly

This Job Is:

- A job for which military experienced candidates are encouraged to apply
- Open to applicants under 18 years old, provided it is legally allowed for the job and location
- Open to applicants who do not have a high school diploma/GED
- Open to applicants who do not have a college diploma
- A job for which people with disabilities are encouraged to apply
- A good job for someone just entering the workforce or returning to the workforce with limited experience and education
- A good fit for applicants with gaps in their resume, or who have been out of the workforce for the past 6 months or more
- A "Fair Chance" job (you or the employer follow Fair Chance hiring practices when performing background checks)

Work Remotely

- No

This Job Is Ideal for Someone Who Is:

- Dependable -- more reliable than spontaneous
- Detail-oriented -- would rather focus on the details of work than the bigger picture
- People-oriented -- enjoys interacting with people and working on group projects



Shipping/Receiving/Warehouse Specialist - job post RESCO Electronics

4405 Triangle Street, McFarland, WI 53558 \$21 an hour - Full-time

RESCO Electronics (www.rescoelectronics.com) *has been recognized as one of The Baltimore Sun's Top Workplaces in 2023 and again in 2024!* We are a manufacturer of cable and electromechanical assemblies and a value-added reseller of bar code equipment to the medical, defense, and industrial equipment industries. We are seeking a **Shipping/Receiving/Warehouse Specialist** to join our Team.

This is a full-time position working in our **Madison, Wisconsin** office on Madison's southeast side. The hours for the position are Monday through Thursday from 8am - 5:30pm and Fridays from 8am - 12pm.

The Shipping/Receiving/Warehouse Specialist works as part of a team to ship and receive raw material and products manufactured by the company. This individual double-checks, organizes and stocks inventory received; issues and stages material required for work orders and performs cycle counts of all inventory while maintaining a clean and orderly warehouse and stockroom.

PRIMARY RESPONSIBILITIES:

- Receives incoming shipments of material against company generated purchase orders (POs) and inter-branch transfer notices (IBs). Locates and stocks received material.
- Ensures all incoming shipments match PO and IB requirements.
- Performs a variety of clerical tasks including, but not limited to: reviewing and scanning receiving documents and filing.
- Packages and ship orders according to customer order and IB requirements.
- Issues and stages material for work orders.
- Performs cycle counts on a regular basis and in accordance with a pre-set schedule.
- Maintains a neat and orderly work area including clear aisles.
- Completes light duty work around the building and office area including, but not limited to, tasks such as clearing snow by the shipping and receiving entrances.

SKILLS, QUALIFICATIONS & EXPERIENCE:

- Must have a high school diploma or GED.
- Must have basic computer experience, a working knowledge of FedEx and UPS software is preferred.
- Experience with MRP/ERP system preferred.
- Must be well organized and have a high attention to detail.
- Experience in a fast-paced clerical or shipping and receiving environment is preferred.
- Must be able to lift packages weighing up to 50 pounds without assistance.

CORE FUNDAMENTAL BEHAVIORS

- Do what's best for our customer Be a fanatic about organization Get clear on expectations Do it right the first time Don't procrastinate Communicate clearly Take the initiative Be flexible Be a team player Embrace change Be productive

Compensation and Benefits: We offer a competitive compensation package that includes paid time off (for vacation, personal, sick time), paid company holidays, health insurance, life insurance, and a 401(k) retirement plan.

Material Handler (Seasonal) - job post WP Beverages Pepsi-Cola

Madison, WI \$18 an hour - Seasonal, Full-time

The Material Handler position is primarily responsible for the effective and efficient building, staging, and loading of products. Additional duties include but are not limited to: General housekeeping, properly stocking and rotating product throughout warehouse locations, organization and staging of shells and pallets, as well as any other duties assigned by the Loading Supervisor.

REQUIREMENTS

1. High-School diploma.
2. Excellent oral and written communication skills with the ability to read, write, and comprehend the English language.
3. Strong organizational, time management and decision making skills with the ability to work within a highly distracting environment.
4. Ability to operate powered industrial equipment including a fork-truck in a safe manner and maintain annual fork-truck certification.
5. Ability to continually lift 60 pounds from floor to waist height and occasionally lift 75 pounds from floor to shoulder height.
6. Prolonged sitting, standing, twisting, and/or bending.
7. The repetitive motion of one's neck, wrist, fingers, and/or arms.
8. Basic math skills.
9. Possess intermediate personal computer skills.
10. Support various operational departments and personnel while working with management to achieve company goals.
11. Willingness to work weekends, evenings, holidays, and overtime as needed.



Bilingual Cleaner/Flooring Technician (\$17-\$19) in Madison - job post MidAmerican Building Services

Madison, WI 53718 \$17.00 - \$19.50 an hour - Part-time

The Project Specialist performs special project work in multiple locations. The Project Specialist works under limited supervision and in a collaborative relationship with other MidAmerican Building Services team members.

Qualifications:

- Must successfully pass a background check.
- Must have a valid driver's license.
- Previous experience in custodial or commercial cleaning preferred, particularly in floor care.
- Knowledge of various floor types and appropriate cleaning methods for each.
- Familiarity with carpet cleaning techniques and equipment is a plus.
- Strong attention to detail with the ability to identify areas needing additional attention.
- Ability to work independently as well as part of a team in a fast-paced environment.
- Excellent time management skills with the ability to prioritize tasks effectively.
- Must be physically capable of performing the duties required, including lifting up to 50 pounds and standing for extended periods.

Job Tasks:

- Responsible for project work in multiple locations, such as stripping and waxing floors, carpet extraction and detail work
- Moves from location to location, covering for staff vacancies in other buildings.
- When covering for onsite staff, handles hard floor care and carpet maintenance (including stripping, waxing, buffing, shampooing, extraction & bonneting) and provides other cleaning services, such as dusting, routine restroom and other area cleaning.
- Collaborate with team members to ensure all areas are cleaned efficiently and effectively.
- Trains subordinate staff in job skills, proper cleaning methods and use of equipment, and safety practices

Physical Demands:

- Ability to regularly lift 45 pounds.
- Ability to push and pull floor cleaning equipment over concrete, tile and carpeted floors.
- Must possess sufficient physical strength, ability and stamina to perform a variety of janitorial tasks related to care of floors.
- Ability to work with a variety of cleaning products.
- Ability to work night shift and/or very early morning hours as dictated by the needs of the position.
- Vision abilities required by this job include close vision, distance vision, color vision, peripheral vision, depth perception and the ability to adjust focus.

Schedule: Evening shift Monday to Friday Night shift Experience: Commercial cleaning: 1 year (Preferred) Language: Spanish (Required)

Handler Warehouse - Part Time (Warehouse like) - job post Fedex

3700 Kinsman Boulevard, Madison, WI 53704 \$17.20 an hour - Part-time

Provides movement of packages, documents, dangerous goods and/or supply support in a timely, safe and efficient manner through effective scan/load methods. This is a non-driving position (public roadways). Performs other duties as assigned.

Knowledge, Skills and Abilities

Able to lift 50 lbs. without assistance from the ground to chest level and ability to maneuver packages of any weight above 50 lbs. using appropriate equipment and/or assistance from another person. Able to walk and stand for designated work hours. Able to bend and squat for designated work hours. Able to maneuver packages above shoulder level. Ability to maneuver packages in enclosed spaces and stack packages above one's head if required at location. Able to work in all weather conditions if required at work location. Able to climb stairs and ladders if required at work location. Able to successfully complete all basic and re-currency training. The ability to communicate both timely and effectively, in a noisy operations environment, is required.

Job Conditions Non-covered safety sensitive position. Ability to work in a constant state of alertness and in a safe manner.

Pay Transparency This compensation range is provided as a reasonable estimate of the current starting salary range for this role across all potential locations. If this opportunity includes multiple job levels, the salary information represents the job level minimum and the job level maximum. Actual starting pay would be determined by experience relative to the job, market level, pay at the location for this job and other job-related factors permitted by law. An employee may be eligible for additional pay, premiums, or bonus potential. The Company offers eligible employees health, vision and dental insurance, retirement, and tuition reimbursement.

Pay Range: \$17.20 per hour plus \$2 per hour pay premium for all hours worked

Additional Posting Information: Monday - Friday 6am - 8:30am OR Monday - Friday 6:30pm-9:30pm



Movers - job post Badger Brothers Moving, LLC Middleton, WI

\$22 - \$27 an hour - Part-time, Full-time

To move to the TOP of our applicant list for consideration, easily apply online at: www.badgerbrothersmoving.com/jobs

Badger Brothers Moving is a household moving company based in Madison, WI. Established in 2010, Badger Brothers Moving has since grown to move over 30,000 households per year. We are Madison and Milwaukee's highest rated moving company, and we're looking for career-oriented, strong, intelligent, charming movers to help us uphold that reputation. A job with Badger Brothers Moving is a fun, flexible job that allows you to work outdoors and make great, consistent money in the form of hourly wages and cash tips.

We are currently hiring laborers and drivers/crew leads. **Our movers earn up to \$22-27+/hour with wages, tips, and bonuses. Like any tipped position, the sky is the limit!**

We have immediate positions available for the right candidates. Experience in customer service and/or manual labor is helpful, but anyone with a strong work ethic and excellent customer service skills should apply. We're also interested in candidates looking for a long-term career. The right candidates will grow with us as we continue to expand throughout Wisconsin and beyond!

Job Requirements and Qualifications:

- 1.) Our absolute most important job requirement is customer service. We are looking for people who are outgoing, easy to talk to, and enjoy small talk with customers.
- 2.) Have a valid Driver's License.
- 3.) You must be able to easily lift and carry 150lbs.
- 4.) No moving experience required - we'll teach you everything you need to know in our rigorous training program.
- 5.) Weekend availability is required.
- 6.) Reliable transportation is required, we are located off the beltline near Rimrock Road.

Key Benefits and Pay:

- 1.) Our movers start with a base hourly rate of \$15.00 per hour, and our drivers earn between \$18.00 - \$20.00 per hour. Most movers become drivers within 4-6 weeks with our GREAT in-house driving training. NO CDL required! We are ALWAYS looking for drivers. A driver's license in good standing is required to become a driver.

-Eligibility for multiple WEEKLY bonuses for good performance, PLUS big cash tips every day. Tips equate to an additional **\$5.00-\$10.00 per hour** on average in addition to your hourly rate!

-Total earnings amount to roughly \$22-27+/hour, but there is no limit to your potential!

- 1.) Overtime hours available (paid at time and a half) when needed.
- 2.) **Year round work available.** We stay busy 12 months per year, and have work available year round to those looking for long term careers and growth opportunities!
- 3.) Paid vacation for Drivers with UNLIMITED accrual and rollover!
- 4.) Several biweekly bonuses and cash incentives.
- 5.) Health Insurance coverage after your 1st 12 months of full time service.
- 6.) Upward mobility - We're growing fast, and we're looking for great people who want to grow with us! Many of our managers started as movers, and we're quickly adding new management and leadership positions as we expand throughout Wisconsin.

Easily apply online at www.badgerbrothersmoving.com/jobs

Benefits: Dental insurance Flexible schedule Health insurance Paid time off Vision insurance

Warehouse Worker I - job post Clopay Corporation Madison, WI 53718 Full-time

Clopay Corporation is North America's largest residential garage door manufacturer.

We pride ourselves on delivering exceptional customer service as well as unsurpassed quality and innovative products. Our employees are the cornerstone of our success and we are looking for dynamic individuals to join our team.

We have an excellent opportunity for a Warehouse Worker at our Madison Distribution Center.

This full time position will:

- Help customers load/unload product
- Assist in maintaining warehouse organization and inventory

Qualifications:

- Candidates must have good communication skills and be able to perform lifting up to 55 pounds on a routine basis.
- Previous warehouse experience and computer proficiency including Oracle preferred, but not required.
- Forklift certification preferred.

Our employees are rewarded with competitive compensation, comprehensive benefits including tuition reimbursement, paid holidays, 401(k) match, sick and vacation time.

Please visit our website at www.clopay.com to learn more about our company. An Equal Opportunity Employer.



Full-Time Seasonal Grounds Crew - job post Vitense Golfland

5501 Schroeder Rd, Madison, WI 53711 \$15 - \$19 an hour - Seasonal

About Us: Vitense Golfland is a **family-owned business** established in 1955 by George and Odie Vitense. Today, it remains proudly owned and operated by George's grandson, Joel Weitz. Our mission is to uphold the family's vision of being a leader in golf entertainment, delivering exceptional guest experiences through the dedication of our outstanding team members.

Our facility includes:

- **A Top 50 Rated Golf Range** in the U.S., featuring 56 heated golf suites with Top Tracer technology for year-round, day and night use, offering full food and beverage service directly to the golf suites.
- **A lit 9-hole, par-3 golf course** available for daytime and nighttime play.
- **#1 rated miniature golf courses** in Wisconsin (one indoor and two outdoor).
- **Babes at Vitense** restaurant and bar.
- **Caddysnacks**, a grab-and-go dining experience.
- **Odie's Beer Garden.**
- **The Vitense Golf Academy**, providing lessons from PGA Professionals.

And much more!

Position Description:

We're looking to expand our **summer Grounds Crew** with **energetic, self-motivated** team members who **enjoy hands-on work** and take pride in keeping our facility spanning 33-acres in top condition. This is a **full-time seasonal role**, with at least **32 hours of work per week from about May-September 2025**, depending on weather conditions.

Job Responsibilities:

As a member of the **seasonal Grounds Crew**, your duties will include:

Golf Course & Facility Preparation:

- Prepare the golf course and driving range for daily play, including picking and washing golf balls.
- Maintain the 9-hole golf course, miniature golf courses, batting cages, and other facilities.

Equipment Monitoring & Maintenance:

- Inspect premises and equipment to ensure they are in proper working condition.
 - Perform basic repairs and preventative maintenance.
- Diagnose and correct mechanical issues.

Landscaping: Mow grass, rake debris, and maintain flower beds. Perform general outdoor upkeep to enhance the appearance of the grounds.

Additional Tasks: Assist with painting or touching up worn or damaged areas. Support other departments as needed.

Why Join the Vitense Golfland Team?

- **Competitive compensation:** \$15-\$19/hr depending on experience
- **Great benefits**, including:
 - **Food Discounts:** 40% off food, even on your days off.
 - **Free Activities:** Enjoy complimentary access to Vitense Golfland attractions for you plus 1 guest.
 - **Retail Discounts:** 25% off retail purchases.

Retail Warehouse Associate - job post Best Buy

7357 West Towne Way, Madison, WI 53719 \$15.00 - \$17.88 an hour - Full-time

As a Retail Warehouse Associate, you'll be part of an energetic and efficient team that's dedicated to delivering tech products from the store's warehouse to our customers when, where and how they need them. You'll retrieve and ship products, restock shelves and take inventory to ensure a great shopping experience. When the situation calls for it, you'll also directly assist customers and collaborate with other employees on the sales floor.

What you'll do

- Unload trucks and record store inventory
- Prepare products to be shipped to other stores and customers' homes
- Stock shelves and organize merchandise displays to help customers see what's possible and quickly purchase products
- Follow established safety guidelines while operating store equipment
- Replenish products daily to ensure they're fully stocked on the sales floor
- Process online orders and assist other employees with store pickup orders



Warehouse Associate - job post The Bruce Company Verona, WI 53593

\$18 - \$21 an hour - Full-time

Are you someone who loves staying active, working with your hands, and being both indoors and outdoors? Do you enjoy a job where no two days are the same? If so, we want YOU on our team as a **Warehouse Associate** in our Inventory Control yard!

Why You'll Love This Job:

- Get hands-on with loading and unloading materials, operating forklifts, bobcats, and skid steers.
- Enjoy a mix of indoor and outdoor work – breathe in the fresh air while keeping things moving.
- Be part of a high-energy team that values efficiency, teamwork, and excellent customer service.
- Keep things organized and help ensure top-quality plants and materials for our customers.
- In the winter, switch it up with snow removal work – because we keep things rolling year-round!

What You'll Do:

- Load and unload materials, ensuring every order is accurate.
- Operate heavy equipment (we'll train you if needed!).
- Assist customers and sales teams with a friendly and helpful attitude.
- Keep the workspace clean and organized for maximum efficiency.
- Work safely and follow all company safety policies.
- Handle additional tasks as assigned – because teamwork makes the dream work!

What We're Looking For:

- A valid driver's license and a solid driving record.
- Experience operating equipment (or a willingness to learn!).
- A strong work ethic and a positive, can-do attitude.
- Ability to lift **50+ pounds** regularly, work on uneven ground, and stay on the move all day.
- Bilingual English/Spanish skills are a plus!

Work Schedule & Details:

- **Full-time, seasonal** role with peak hours from **April to November (40-55 hours per week)**.
- Typical hours: **Monday–Friday, 6:30 AM – 5:00 PM, with occasional Saturdays**.
- Winter months (December–March) vary based on snow removal needs.
- Overtime opportunities available based on workload.

Benefits

The Bruce Company offers competitive hourly pay, including medical, dental, vision, life, disability, and retirement benefits, and more coupled with a challenging and team-oriented work environment to help you succeed in your career.

Landscape Laborer - job post Glacier Landscape, Inc.

7395 County Highway Pd, Madison, WI 53593 \$18 - \$26 an hour - Full-time

Summary of Landscape Laborer Position: The Landscape Laborer is responsible for the placing of sod, seed, edging, mulches, pavers, walls, and plantings on commercial and private properties according to the customer's highest standards in an efficient and timely manner. Employees must demonstrate a high degree of customer service and customer interaction. In addition, other duties such as tree work and mowing will be assigned during other periods of time.

Hours of Work: This is a seasonal full-time position. Because Landscape Laborer is a weather-dependent outdoor position, hours may be adjusted at any time. Normal work hours are 40 - 50 hours per week, Monday through Friday with some Saturday work. The normal work year is Spring through Fall, however, more hours may be available for snow removal in the winter.

Required Licenses: A valid Wisconsin driver's license is desirable and a CDL would be preferred.

Required Experience: Prior landscaping experience installing hardscapes and plantings is preferred, but training is available for qualified candidates. Employees must be mechanically inclined and have a good work ethic.

Position Description: The following duties are included for this position:-Installing sod, seed, edging, mulches, pavers, walls, plantings, and other hardscape/landscape items.-Must be able to work independently and/or with other landscapers/landscape crews.-Participate in Spring and Fall cleanups as required.-Other duties such as mowing as assigned.

Job Location: Madison Metropolitan and surrounding areas. Job Type: Full-time

Glacier Landscape offers some of the highest and most competitive benefits in the industry. 401k, life & health insurance, uniform allowance, and vacation.



Maintenance 1st or 2nd shift M-F - job post Weyauwega Cheese Sun Prairie, WI 53590

\$25 - \$28 an hour - Full-time

Weyauwega Cheese is a family-owned company specializing in Wisconsin's Finest Dairy Products. We believe that our Maintenance team is fundamental to our operations, ensuring equipment runs optimally while maintaining the facility. Maintenance mechanics/technicians are respected versatile team members, performing mechanical and/or fabrication updates and using their knowledge to continuously improve production processes.

What You'll Get:

- Competitive wages based on experience
- Stable work environment with a growing company
- Medical insurance, dental and vision insurance
- Paid vacation time after 30 days of employment
- Retirement plan with company match
- Paid onsite and offsite training
- Positive work environment with family spirit

What You'll Do:

- Repair and maintain a wide variety of food processing machinery and conveyers
- Work with fabrication, installation of equipment, hydraulics and pneumatics
- Assist with maintaining product flow through the plant as needed

What You'll Bring:

- Mechanical aptitude Prior experience with mechanical maintenance preferred Positive attitude Willingness to learn/enhance skills through on the job training Strong work ethic Safety mindset

Benefits: 401(k) 401(k) matching Dental insurance Employee assistance program Employee discount Flexible schedule Health insurance Health savings account Life insurance Paid time off Retirement plan Vision insurance

Warehouse Material Handler - job post Design Air, LLC

5518 Femrite Drive, Madison, WI 53718 Full-time

We are currently looking for a full-time Material Handler to join our Madison, WI team with a 10:00am start time. As a Material Handler, you will be primarily responsible for pulling product for customer orders using an RF scanning gun. You will also prepare shipments and load trucks using good use of space and ensuring safety at all times.

What you'll do

- Pull orders accurately as assigned for daily deliveries using an RF scanner
- Stage orders according to truck location and verify the accuracy of pallets, etc.
- Load trucks for daily and special deliveries
- Recognize damaged product at any point in the process and take appropriate action
- May operate a forklift or other warehouse machinery
- Assist customers and/or drivers in loading materials into vehicles and trucks
- Work as a team as well as individually
- Performs housekeeping duties and other duties as assigned

What we're looking for

- Experience working in a fast-paced, distribution or warehouse environment preferred, but not required
- High attention to detail and strong math skills to ensure accuracy
- Ability to follow direction and safe operating procedures
- Ability to lift up to 50 lbs. repetitively throughout the shift without assistance (weight varies based on product)
- Work at heights of 20 ft. on a regular basis
- Ability to be trained to use forklifts and other warehouse machinery
- Work on his/her feet including walking for extended periods of time
- Willing to work overtime as needed

What's in it for you Performance based competitive pay Warehouse team monthly and annual incentive pay program Full benefits package! Eligible on date of hire Retirement plan with a 6% company match! Eligible on date of hire No weekends! Work Monday through Friday



General Manufacturing Associate 1 - 2nd Shift - job post Fisher-Barton Inc.

515 Progress Way, Sun Prairie, WI 53590 Full-time

If you are mechanically inclined, can work safely and efficiently as part of a team and are looking for an opportunity to grow, a role as a Fisher Barton General Manufacturing Associate might be for you. General Manufacturing Associates learn skills in one or more Production areas – such as: packaging, warehouse, straightening, broaching, facilities, and grit blasting. This role is a great introduction to Production at Fisher Barton. Fisher Barton values our 3C's Culture, working every day to execute Customer Excellence, A Culture of Fairness, and Community Involvement.

At Level 1, You will:

- Produce, inspect, or package product following work instructions
- Ensure materials are labeled and packaged properly
- Accurately complete daily production and quality paperwork
- Enter data into the computer systems on time
- Perform general maintenance and housekeeping of working areas
- May operate forklift and/or overhead crane to safely move materials

Required Qualifications:

- Basic math skills

Preferred Qualifications:

- High School Diploma or Equivalent
- Experience working in a manufacturing environment

Physical | Visual Demands:

- Ability to stand 8-12 hours a day
- Ability to sit, stand, squat and bend
- Reach overhead with one or both arms
- Repetitive movement of lifting and placing parts on machines / up to 15 pounds
- Ability to occasionally lift up to 50 pounds
- Ability to occasionally push/pull up to 75 pounds

F&B Warehouse Crew - job post MADISON MALLARDS LLC

2920 N Sherman Ave, Madison, WI 53704 Seasonal

The F&B Warehouse Crew is responsible for the movement of product throughout the ballpark as well as helping keep a clean and organized work environment. Warehouse crew consists of keg movers and food movers. This position requires the ability to routinely lift 50 lbs safely. The minimum age to work as a warehouse crew member is 18 years old.

Responsibilities Include:

- Moving beer kegs around the ballpark to keep areas stocked throughout the event.
- Monitoring keg levels and changing them when necessary.
- Moving non-beer related items from storage to concessions locations throughout the ballpark.
- Communicating with food and beverage supervisors when the situation calls for it.

Part Time Evening Cleaner - East Madison, WI - job post CleanPower Madison, WI 53704

\$14.50 an hour - Part-time

Shift: Monday, Tuesday 6:30 pm-8:45 pm Wednesday and Friday 6:30 pm-9:15 pm and Friday 6:30 pm- 9:00 pm

Requirements:

You must be 18 years old.

For safety reasons, you must be able to speak English.

A criminal background check is required.

Preemployment drug screen.

Able to lift up to 40lbs.

Job Duties:

Cleaning Restrooms Taking out the trash Mopping Wiping Down Surfaces Vacuuming



Warehouse Material Handler - job post US Venture

Madison, WI 53718 \$19 an hour - Full-time

DIVISION : U.S. AutoForce POSITION SUMMARY U.S. AutoForce, a division of U.S. Venture, Inc., brings together more than 100 years of experience as an industry leader in the distribution of tires, undercar parts, and lubricants to independent tire retailers, auto repair shops, and automotive dealerships.

Schedule for this position is Monday - Friday, 4:45am - 1:15pm or until work is completed. Saturdays on rotation. Schedules are subject to change based on business needs. **WHAT YOU'LL DO**

Load, unload and stock tires and auto parts in a fast-paced warehouse environment using industrial vehicles such as a forklift or picker equipment

Stay fit doing hands-on work. You can expect to lift up to 80 lbs. Some of our stock racks are 25 feet tall, so you must be comfortable working at those heights.

Be on the move. You should be willing and able to work on your feet for extended periods of time and work overtime as needed

Contribute to our culture of safety, ensuring adherence to all safety policies and operating procedures

OUR BENEFITS

Highly competitive wages - \$19.00/hr Weekly pay Healthcare benefits 401(k) with match Paid Vacation, Sick time, Volunteer Hours and Holidays On-the-job training and skill development Tuition Reimbursement Employee Discount Programs

Physical Demands and Work Environment:

Physical demands : While performing the duties of this job, the employee is frequently required to stand; walk; sit; use hands to finger, handle or feel objects, tools or controls; reach with hands and arms; climb stairs; balance, stoop, kneel, crouch or crawl; talk, hear, taste and/or smell; the employee must occasionally lift products weighing up to approximately 80 pounds. Handling of tires (e.g., rolling, destacking, team lifting) greater than approximately 70 pounds. Specific vision abilities required by the job include close vision, distance vision, color vision, peripheral vision, depth perception and the ability to adjust focus.

Protective equipment required : steel or composite toe boots, safety vest, harness, seatbelt , SRL (self-retracting lifeline). All equipment is provided by U.S. AutoForce except for steel / composite toe boots.

Work environment : While performing the duties of this job, the employee may be exposed to weather conditions prevalent at the time. The noise level in the work environment is usually moderate. Fumes associated with tires and occasionally car parts and lubricants prevalent.

QUALIFICATIONS 1 year of relevant work experience 18 years of age or older Ability to work accurately with lengthy part numbers Above average scanning accuracy Ability to follow directions and safe operating procedures Neat and well organized Ability to lift up to 80 pounds Ability to work at heights of 25 feet Work on feet for extended periods of time Willing to work overtime as needed Basic computer/RF scanner experience Successfully pass a pre-employment drug test (we do not test for THC/marijuana)

Mover and Packer - job post WellRive Madison, WI 53718 From \$20 an hour - Part-time

We offer complete move and transition planning services, taking care of all details to create a seamless process, providing clients with peace of mind. Additionally, we help with staging client's homes and Retirement community apartments. Our team works with a range of clients, and to accomplish our timelines we need a team leader to help us with managing and delivering the packing material. This position also includes occasionally assisting with staging, packing, and unpacking.

PASSION FOR SERVICE Our clients are the center of everything we do and every decision we make, without compromise.

COMMITMENT TO INTEGRITY We earn our business by being the best at what we do, acting honestly and keeping our promises.

Job Requirements –

- Motivated and compassionate individual who thinks creatively to solve problems.
- Stamina for physically taxing work and able to lift to 30 -50 lbs.
- Ability to pack/unpack at client's home for extended periods of time.
- Dependable - committed to work scheduled shifts beginning to end.
- Ability to complete work assignments and manage time.
- Commitment to adhering to the company's safety and security culture.
- Reliable transportation
- A valid driver's license is required.
- Pre-employment background check.

Compensation – 30 hours per week on average. Some weeks may be more than 30 hours.



Apply at UW Health

Supply Clerk Madison, WI, United States

This is a full-time, 1.0 FTE position. Scheduled hours are 2:30pm – 11:00pm, Monday through Friday with rotating weekends and holidays required. Hours may vary based on the operational needs of the department.

Be part of something remarkable

Join the #1 hospital in Wisconsin! Be a member of a cohesive team assisting and supporting each other.

We are seeking a **Supply Clerk** to:

- Ensure our physicians, nurses, and others have everything needed to care for our patients - medical/surgical supplies, linen, and equipment.
- Use their attention to detail and organizational skills in an exciting and fast-paced environment.
- Interact with a variety of computer applications to ensure timely and accurate inventory transitions.
- Interact with customers, both in person and over the phone, in a professional and supportive manner.

At UW Health, you will have:

- An excellent benefits package, including health and dental insurance, paid time off and retirement plans.
- Access to UW Health's Wellness Options at Work that to support employee/family well-being.
- Tuition reimbursement eligibility after 1 year of employment - UW Health invests in your professional growth by helping pay for coursework associated with career advancement.

Qualifications High School Diploma or equivalent (Required)

Work Experience Relevant experience in a healthcare environment (Preferred)

Communication Center Representative Madison, WI, United States

80% FTE, 3rd shift. This shift is on a 4 day rotation that shifts every week, weekends required. Scheduled hours are from 11pm – 7am.

We are seeking a **Communication Center Representative** to:

- Support paging, messaging and scheduling, and appointment services for UW Health.
- Provide remarkable customer service to UW Health staff, physicians, and patients.
- Confirm and cancel appointments on nights, weekends and holidays for specifically designated clinics.
- Take various calls ranging from connecting callers to inpatient rooms, notifying an on-call physician about an organ offer, and executing emergency plans.

You will use:

- High quality personal computer workstations.
- State-of-the-art telephone technology in a call center environment.
- Proprietary software programs specifically designed for call handling, message taking, appointment scheduling and radio paging services.

At UW Health, you will have:

- An excellent benefits package, including health and dental insurance, paid time off, retirement plans, two-week paid parental leave and adoption assistance.
- Access to great resources through the UW Health Employee Wellbeing Department that supports your emotional, financial, and physical well-being.
- Tuition benefits eligibility - UW Health invests in your professional growth by helping pay for coursework associated with career advancement.
- Options for a variety of schedules and shifts that offer flexibility and allow for work-life balance.

Qualifications

- Associate's Degree in Healthcare, Information Technology, Business, or related field (2 years of relevant work experience may be considered in lieu of degree) Required
- Associate's Degree or Bachelor's degree in Healthcare, Information Technology, Business, or related field strongly Preferred

Work Experience

- Experience in a large automated call service center and familiarity with at least one form of call processing software Preferred
- 1 year of experience in a medical, call center, or customer service environment Preferred



Clinic Assistant - Peds Specialties Madison, WI, United States

100% FTE, 40 hours/week, eight-hour day shifts scheduled Monday through Friday between the hours of 8:00 AM – 5:00 PM.

Be part of something remarkable

Work at the nationally known American Family Children's Hospital.

We are seeking a **Clinic Assistant** to:

- Perform chart/lab audits and data entry.
- Reprocess scopes and other equipment per protocol.
- Clean procedure tables, equipment, and other work areas according to infection control and/or isolation procedures.
- Stock exam/procedure rooms, inventory specialty items, and initiate reorder of supplies as needed.
- Clerical work as needed.

At UW Health, you will have:

- An excellent benefits package, including health and dental insurance, paid time off, retirement plans, two-week paid parental leave and adoption assistance.
- Options for a variety of schedules and shifts that offer flexibility and allow for work-life balance.
- Access to UW Health's Wellness Options at Work that support employee/family well-being.
- Tuition benefits eligibility - UW Health invests in your professional growth by helping pay for coursework associated with career advancement.

Education:

Preferred – High School Diploma or equivalent

Work Experience:

Preferred – Previous work experience in a healthcare setting

Culinary Production Assistant Madison, WI, United States

100% FTE, Days. Scheduled hours would be Monday through Friday from 5:00 am to 1:30 pm. Hours may vary based on the operational needs of the department. You will work at the University Hospital at 600 Highland Ave in Madison, WI.

Be part of something remarkable

Join the #1 hospital in Wisconsin! Put your passion for food and culinary experience to use and join our remarkable culinary team. You will support production, retail food venue, patient meals, and catering operations to ensure the right food is available for the right person at the right time.

We are seeking a **Culinary Production Assistant** who:

- Provides outstanding customer and coworker service.
- Reviews production and stocking schedules.
- Accurately and safely prepares and portions food items.
- Sanitizes dishes, cookware, equipment, and environment.

Culinary Production Assistants are eligible for:

- Paid time off, including 15 days of vacation time for full-time employees.
- A free bus pass to assist with transportation to and from work.
- Continuing education for both professional and personal growth.

At UW Health, you will have:

- An excellent benefits package, including health and dental insurance, paid time off, retirement plans, two-week paid parental leave and adoption assistance.
- Options for a variety of schedules and shifts that offer flexibility and allow for work-life balance.
- Access to UW Health's Wellness Options at Work that support employee/family well-being.
- Tuition benefits eligibility - UW Health invests in your professional growth by helping pay for coursework associated with career advancement.

Qualifications

- High School Diploma or GED Preferred

Work Experience Food service and/or customer service experience Preferred

Licenses & Certifications ServSafe Certification Preferred



Room Service Line Cook Madison, WI, United States

100% FTE Day/Evening. Scheduled shifts would be from 10:00 am to 8:30 pm with every other weekend required. Hours may vary based on the operational needs of the department. You will work at University Hospital at 600 Highland Ave in Madison, WI.

Be part of something remarkable

Join the #1 hospital in Wisconsin!

Work as a talented culinary expert to compose and prepare meals from scratch. The Food Production Cook is responsible for hot and cold food production in a high-volume kitchen. Enjoy this fast-paced, team environment while being able to quickly problem-solve and make decisions.

We are seeking a **Room Service Line Cook** to:

- Prepare large volumes of food with a high level of complexity, variety, and quality. Prepare entrees, sandwiches, soups, starches, vegetables, sauces, and desserts for general diets and modified diets.
- Assess quality and condition of ingredients used in food production.
- Prepare food production reports and documentation.

Cooks are eligible for:

- Paid time off, including 15 days of vacation time for full-time employees.
- A free bus pass to assist with transportation to and from work.
- Continuing education for both professional and personal growth.

At UW Health, you will have:

- An excellent benefits package, including health and dental insurance, paid time off, retirement plans, two-week paid parental leave and adoption assistance.
- Options for a variety of schedules and shifts that offer flexibility and allow for work-life balance.
- Access to UW Health's Wellness Options at Work that support employee/family well-being.
- Tuition benefits eligibility - UW Health invests in your professional growth by helping pay for coursework associated with career advancement.

Qualifications High School Diploma or equivalent Required

- Associate's Degree in Culinary, Hospitality, or Nutrition Preferred

Work Experience

- 1 year experience in high volume food production setting Required
- 2 years experience in high volume food production setting Preferred

Licenses & Certifications ServSafe certification required within 6 months of hire Required

Sterile Processing Tech I Madison, WI, United States

This is a full-time, 1.0 FTE position. Scheduled hours are 3:00pm – 11:30pm, Monday through Friday. Hours may vary based on the operational needs of the department.

We are seeking a **Sterile Processing Technician** to:

- Work in a fast-paced environment that requires detailed, technical skills.
- Have a role in keeping our patients safe and know that you are contributing to our remarkable patient care.
- Interact with innovative surgical instrumentation and reprocessing equipment.
- Be a member of a cohesive team assisting and supporting each other.
- Advance in your career and climb the Reprocessing Department's career ladder.

All required Personal Protective Equipment (PPE) is provided to our Sterile Processing Technicians which meets OSHA and AMMI standards.

At UW Health, you will have:

- An excellent benefits package, including health and dental insurance, paid time off and retirement plans.
- Access to UW Health's Wellness Options at Work that to support employee/family well-being.
- Tuition reimbursement eligibility after 1 year of employment - UW Health invests in your professional growth by helping pay for coursework associated with career advancement.

Qualifications High School Diploma or equivalent (Required)

Licenses & Certifications Certification by CBSPD as a Certified Sterile Processing and Distribution Technician or IAHCSSM as a Certified Registered Central Service Technician (Preferred)



Medical Coding Specialist II - Profee Radiation Oncology Middleton, WI, United States (Remote)

This is a full-time, 1.0 FTE position that is 100% remote. Hours may vary based on the operational needs of the department. Applicants hired into this position can work from most states. This will be discussed during the interview process.

We are seeking a **Medical Coding Specialist II** to:

- Utilize available encoder, grouper software, and other coding resources to determine the appropriate ICD-10-CM, CPT, and/or HCPCS including specialty specific codes and Evaluation and Management (E&M) codes.
- Maintain an understanding and apply knowledge of National Correct Coding Initiatives (NCCI), Local Coverage Documents and National Coverage Documents (LCD/NCD) directives, Medically Unlikely Edits (MUEs), and Medicare Teaching Physician Guidelines, applying knowledge of applicable regulatory requirements and institutional guidelines to select appropriate codes and modifiers.

At UW Health, you will have:

- An excellent benefits package, including health and dental insurance, paid time off, retirement plans, two-week paid parental leave and adoption assistance.
- Access to great resources through the UW Health Employee Wellbeing Department that supports your emotional, financial, and physical well-being.
- Options for a variety of schedules and shifts that offer flexibility and allow for work-life balance.
- Tuition benefits eligibility - UW Health invests in your professional growth by helping pay for coursework associated with career advancement.

Qualifications High School Diploma or equivalent and medical coding education Required or In lieu of a medical coding education, an active coding certification Required Associate's Degree in a healthcare related field Preferred

Work Experience 1 year of progressive coding experience (For HCC-specific roles, experience must be specific to HCC) Required

- 2 years progressive coding experience in multiple specialties, HCC Risk adjustment Coding Preferred

Licenses & Certifications

- Certified Professional Coder (CPC) Upon Hire Required or
- Certified Outpatient Coder (COC) Upon Hire Required or
- Certified Inpatient Coder (CIC) Upon Hire Required or
- Certified Coding Specialist (CCS) Upon Hire Required or
- Certified Coding Specialist Physician-Based (CCS-P) Upon Hire Required or
- Certified Coding Associate (CCA) Upon Hire Required or
- Certified Risk Adjustment Coder (CRC) Upon Hire Required or
- Registered Health Information Technician (RHIT) Upon Hire Required or
- Registered Health Information Administrator (RHIA) Upon Hire Required
- Registered Health Information Technician (RHIT) Preferred or
- Registered Health Information Administrator (RHIA) Preferred

Driver – Outreach Madison, WI, United States

This is a part-time, 35% FTE position. Monday through Friday between 7:00am – 5:00pm with flexibility. Hours may vary based on the operational needs of the department.

We are seeking a **Driver** to:

- Operate a UW Health vehicle to primarily pick up and transport our UW Health physicians to and from our UW Health and non-UW Health locations.
- Demonstrate professionalism and excellent communication when interacting with physicians and external customers.
- Perform vehicle safety inspections and monitor the vehicle's oil and fuel levels.
- Follow proper procedures and safety precautions while operating a motor vehicle.

Qualifications High School Diploma or equivalent (Preferred)

Work Experience Experience in delivery setting involving multiple locations (Preferred)

Licenses & Certifications Valid Wisconsin Driver's License (Required)



Valet Driver Madison, WI, United States

This is a full-time, 100% FTE position. Scheduled hours are Monday through Friday from 9:30am - 6:00pm. Hours may vary based on the operational needs of the department.

Be part of something remarkable

Join the #1 hospital in Wisconsin!

We are seeking a **Valet Driver** to:

- Provide remarkable customer service as a first and last impression of UW Health.
- Initiate the parking transaction by approaching the vehicle, greeting patients/visitors, and explaining services.
- Pick up patients/visitors at their vehicle and transport them in one of our UW Health golf carts.
- Manage and record valet parking transactions.
- Assist patients in and out of vehicles and with wayfinding.

At UW Health, you will have:

- An excellent benefits package, including health and dental insurance, paid time off and retirement plans.
- Access to UW Health's Wellness Options at Work that support employee/family well-being.
- Tuition reimbursement - UW Health invests in your professional growth by helping pay for coursework associated with career advancement.

Qualifications

High School Diploma or equivalent (Required)

Work Experience

- One year of customer service experience (Preferred)
- One year of driving and parking vehicles experience (Preferred)

Licenses & Certifications

Valid Wisconsin driver's license (Required)

Patient Access Lead Madison, WI, United States

This is a full time, 1.0 FTE position. Shifts will be scheduled Monday-Friday between the hours of 8:00 AM -4:30 PM. On call and Holiday hours are required. Must be flexible to cover all hours of operations. Hours may vary based on the operational needs of the department. You will work at 1 S. Park St. in Madison, WI. This person will also travel to 20 S. Park St, Union Corners Urgent Care and University Station.

We are seeking a **Patient Access Lead** to:

- Oversee the daily operations of specific work units within the Patient Access Department.
- Partner closely with supervisors to provide leadership coverage and presence to the registration and admissions work units in the clinics and the hospital divisions.
- Ensure effective operations by organizing, scheduling, and monitoring the department workload.

At UW Health, you will have:

- An excellent benefits package, including health and dental insurance, paid time off, retirement plans, two-week paid parental leave and adoption assistance.
- Access to great resources through the UW Health Employee Wellbeing Department that supports your emotional, financial, and physical well-being.
- Tuition benefits eligibility - UW Health invests in your professional growth by helping pay for coursework associated with career advancement.
- The opportunity to earn a referral bonus for referring friends, former colleagues or others to apply for open, posted positions.
- Options for a variety of schedules and shifts that offer flexibility and allow for work-life balance.

Qualifications

- High School Diploma or equivalent Required
- Associate's Degree in Business, Finance, Health Info Management, or related field Preferred

Work Experience

- 1 year of experience in a patient access, healthcare revenue cycle, or clinic operations role Required
- 2 years of experience in a patient access, healthcare revenue cycle, or clinic operations role with progressive leadership responsibilities Preferred



Apply at www.cityofmadison.com

AASPIRE Intern*

SALARY \$20.46 Hourly

LOCATION Madison, WI

JOB TYPE HOURLY

JOB NUMBER 2025-00081

DEPARTMENT City Wide Miscellaneous

OPENING DATE 02/24/2025

CLOSING DATE 3/31/2025 11:59 PM Central

COMP. GROUP/RANGE 17/00

The City of Madison is looking for motivated and talented interns to participate in the Affirmative Action Student Professionals in Residence (AASPIRE) internship program. This is a paid, summer internship that lasts for 8-10 weeks where you will work on a meaningful project that cultivates your area of interest. Through this internship you will also have a chance to explore and establish career goals, acquire practical interviewing experience, develop essential skills, broaden your network, learn more about future employment opportunities, and gain experience in public service. City managers will provide you guidance, mentoring and help you more deeply understand what it means to provide public service.

Aquatics Supervisor

SALARY \$25.10 Hourly

LOCATION Madison, WI

JOB TYPE HOURLY

JOB NUMBER 2025-00099

DEPARTMENT Parks Division

OPENING DATE 02/28/2025

CLOSING DATE 3/21/2025 11:59 PM Central

COMP. GROUP/RANGE 17/00

As an Aquatic Supervisor you will help oversee the City of Madison Aquatics Program. The Aquatics Supervisor is responsible for overseeing the daily operations of the Goodman Pool. They ensure standards are maintained for the City of Madison Aquatics Program. Responsibilities include assisting with payroll, scheduling, chemicals, teaching in-services, responding to emergencies, and enforcing rules, policies, and procedures as needed. They report directly to the Aquatics and Parks Program Coordinator and/or the Recreation Services Coordinator. This position requires advanced knowledge of aquatics and conflict resolution. The Aquatic Supervisor also helps oversee the City of Madison Beach's and Splash Parks.

Construction Inspector (Hourly)

SALARY \$21.44 - \$24.93 Hourly

LOCATION Madison, WI

JOB TYPE HOURLY

JOB NUMBER 2024-00480

DEPARTMENT Engineering Division

OPENING DATE 02/07/2025

CLOSING DATE 9/6/2025 11:59 PM Central

COMP. GROUP/RANGE 15/00

As a Construction Inspector you will perform technical/paraprofessional and related manual work in support of engineering programs. Work is performed under the supervision of a professional Engineer, Surveyor, Construction Inspector, Sidewalk Program Supervisor or Public Works Supervisor. Although duties vary based on assignment, current vacancies exist in construction activities, surveying and utility locating/markings.



Crossing Guard

SALARY \$20.86 Hourly

LOCATION Madison, WI

JOB TYPE HOURLY

JOB NUMBER 2024-00469

DEPARTMENT Traffic Engineering Division

OPENING DATE 03/11/2025

CLOSING DATE 3/18/2025 11:59 PM Central

As a Crossing Guard, you will help safeguard students on their way to and from school. Are you responsible, dependable, enjoy kids and the outdoors? Then it may be a perfect match! Experience the satisfaction of working in an outdoor setting while promoting safety and well-being. This is routine outdoor work performed on pre-scheduled and/or "as assigned" basis with varied shifts in various locations within the City of Madison. Major responsibilities include caring for the safety of children at street crossings. Work is performed under the supervision of a Crossing Guard Supervisor under the administration of the Traffic Engineering Division.

Crosswalk Painter

SALARY \$21.98 Hourly

LOCATION Madison, WI

JOB TYPE HOURLY

JOB NUMBER 2025-00005

DEPARTMENT Traffic Engineering Division

OPENING DATE 02/28/2025

CLOSING DATE 3/31/2025 11:59 PM Central

This is responsible seasonal work independently locating, marking, and painting cross walks, stop bars, flat islands, and other related street markings throughout the City of Madison. Work is performed during night time hours when supervision is not immediately available. Assignments are provided by Leadworkers and performed independently or as part of a crew with limited supervision.

Environmental Scientist, Geologist, Engineer, or Hydrogeologist*

SALARY \$38.17 - \$49.79 Hourly \$2,957.82 - \$3,858.72 Biweekly \$6,408.61 - \$8,360.56 Monthly \$76,903.32 - \$100,326.72 Annually

LOCATION Madison, WI

JOB TYPE PERMANENT FULL TIME

REMOTE EMPLOYMENT Flexible/Hybrid

JOB NUMBER 2025-00061

DEPARTMENT Engineering Division

OPENING DATE 03/13/2025

CLOSING DATE 3/31/2025 11:59 PM Central

COMP. GROUP/RANGE 18/08 or 18/10

Are you looking for work-life balance and the ability to work remotely up to 60% of the time? Are you passionate about water resources and environmental sustainability? Do you have a degree in geology, hydrogeology, environmental engineering, geosciences, environmental science, or a closely related scientific field? Do you have two (2) or more years of hydrogeological experience that involved groundwater contaminant assessment and related evaluation and remediation activities? Then we're looking for you to join our team as an Environmental Scientist, Geologist, Engineer, or Hydrogeologist!

Field Service Representative 1

SALARY \$28.19 Hourly \$2,254.92 Biweekly \$4,885.66 Monthly \$58,627.92 Annually

LOCATION Madison, WI

JOB TYPE PERMANENT FULL TIME

JOB NUMBER 2025-00119

DEPARTMENT Water Utility

OPENING DATE 03/12/2025

CLOSING DATE 3/26/2025 11:59 PM Central

The Field Service Representative is the face to face customer service person for the Madison Water Utility (MWU). The position performs skilled work in the installation, maintenance, and assistance in disassembling and repair of 5/8-inch through 2 inch water meters. The work involves going into homes and businesses, removing and installing residential and commercial/multi-family water meters and endpoints. This position also assists in disassembling, cleaning and testing water meters in the shop.



Fire & EMS Pathway Intern*

SALARY \$17.50 Hourly \$1,400.00 Biweekly \$3,033.33 Monthly \$36,400.00 Annually

LOCATION Madison, WI

JOB TYPE HOURLY

JOB NUMBER 2025-00132

DEPARTMENT Fire Department

OPENING DATE 03/17/2025

CLOSING DATE 4/4/2025 11:59 PM Central

COMP. GROUP/RANGE 17/00

This is a two-year program where interns will spend their time between on-the-job training at MFD, classroom instruction at Madison College, intern work at MFD, and experiential shadowing at the MFD. These positions will spend up to:

- 16 hours per week participating in incident response and job shadowing,
- 12 hours per week participating in community outreach and administrative work, and
- 12 hours per week of classroom instruction and study (up to 16 credits per semester).

Food and Beverage Server (Hourly)

SALARY \$9.16 Hourly

LOCATION Madison, WI

JOB TYPE HOURLY

JOB NUMBER 2024-00433

DEPARTMENT Parks Division

OPENING DATE 01/09/2025

CLOSING DATE 6/1/2025 11:59 PM Central

The City of Madison is hiring Food and Beverage Servers. This position involves Parks food and beverage service, generally at one of the City-owned golf courses. The work primarily involves taking orders and preparing and delivering food and beverages. This position prepares a limited menu of guest meals, prepares guest beverages, provides customer service, and performs minor janitorial practices. In addition, this position maintains effective employee and customer relations typically associated with restaurant wait staff. Under direct supervision of the Assistant Golf Professional this position may involve emergency response and/or technical decisions not subject to immediate review.

Golf Course Maintenance Laborer (Hourly) - Seasonal*

SALARY \$20.53 Hourly

LOCATION Madison, WI

JOB TYPE HOURLY

JOB NUMBER 2024-00437

DEPARTMENT Parks Division

OPENING DATE 01/28/2025

CLOSING DATE 6/1/2025 11:59 PM Central

The City of Madison is hiring Golf Course Maintenance Laborers! The successful candidates will be responsible for manual labor work maintaining the City of Madison Golf Courses. Employees will provide basic landscaping services and building maintenance activities for the Madison Golf Courses. Employees will be expected to work with fertilizers and will have frequent exposure to pollen, dust, grass clippings, etc.

Head Attendant (Hourly)

SALARY \$20.89 Hourly

LOCATION Madison, WI

JOB TYPE HOURLY

JOB NUMBER 2025-00100

DEPARTMENT Parks Division

OPENING DATE 02/28/2025

CLOSING DATE 3/21/2025 11:59 PM Central

The City of Madison is looking to fill an aquatics head attendant position. The successful candidate will be responsible for directing the daily operations of the Goodman Pool concessions and admissions. Under the supervision of the on-duty aquatics supervisor, the head attendant will lead a team of concessions and admissions attendants to facilitate successful operation of the related areas of the Goodman Pool. This position will input supply inventories on a daily basis, serve as the point of contact for customer service and provide direction to staff. The successful candidate will use considerable judgment and professionalism in their daily work.



Head Lifeguard (Hourly)

SALARY \$19.92 Hourly

LOCATION Madison, WI

JOB TYPE HOURLY

JOB NUMBER 2025-00098

DEPARTMENT Parks Division

OPENING DATE 02/28/2025

CLOSING DATE 3/21/2025 11:59 PM Central

Head Lifeguards at Goodman Pool oversee the daily operations of the lifeguard team, ensuring that the objectives of the Aquatics Program are consistently met. This role involves enforcing strict water safety and sanitation protocols, as well as ensuring that all lifeguards adhere to these standards.

Laborer (Hourly) - Seasonal*

SALARY \$20.53 Hourly

LOCATION Madison, WI

JOB TYPE HOURLY

JOB NUMBER 2024-00438

DEPARTMENT City Wide Miscellaneous

OPENING DATE 02/07/2025

CLOSING DATE 6/1/2025 11:59 PM Central

COMP. GROUP/RANGE 16/00

The City of Madison is hiring for multiple entry-level, manual work positions for our 2025 spring, summer, and fall seasons! Seasonal employment can be a step towards a permanent career with the City! The selected candidates will work for one of the City's Public Works agencies, including Parking, Parks, Streets, Traffic Engineering, and the Water Utility. It is anticipated that the following number of seasonal laborers will be hired by division: Parking Utility (2); Parks (38); Streets (17); Traffic Engineering (5); and Water Utility (5). For a period of six (6) months following completion of seasonal employment.

Landscape Architect 1 or 2*

SALARY \$34.09 - \$43.87 Hourly

\$2,726.90 - \$3,509.95 Biweekly

\$5,908.28 - \$7,604.89 Monthly

\$70,899.40 - \$91,258.70 Annually

LOCATION Madison Parks, WI

JOB TYPE PERMANENT FULL TIME

JOB NUMBER 2025-00077

DEPARTMENT Parks Division

OPENING DATE 02/26/2025

CLOSING DATE 3/19/2025 11:59 PM Central

COMP. GROUP/RANGE 18/06 or 18/08

The City of Madison Parks Division seeks qualified candidates for the position of Landscape Architect 1 or 2*. May 2025 graduates are welcome to apply!

This is professional landscape architectural work performed in the office and/or field in connection with the planning, design, construction, and inspection of parks and related facilities. This position will play a key role in project management and collaborating with interested/affected community members and groups on projects to ensure equitable investment across the Parks system that promotes accessibility and inclusion for all.



Library Security Monitor

SALARY \$20.28 Hourly

LOCATION Madison, WI

JOB TYPE HOURLY

JOB NUMBER 2025-00145

DEPARTMENT Madison Public Library

OPENING DATE 03/17/2025

CLOSING DATE 3/31/2025 11:59 PM Central

COMP. GROUP/RANGE 16/00

The Madison Public Library is looking to hire Library Security Monitors. If you are interested in a Library Security Monitor position, this is your opportunity to apply. Library Security Monitors provide critical safety assistance and customer service to library customers and staff. The work involves promoting a welcoming and helpful library atmosphere, ensuring customers follow all facility rules, policies, and City ordinances, resolving conflicts, and supporting customers and staff so that customers have a successful library experience. In addition, the work may include checking materials in and out, assisting people with basic computer tasks, and frontline service to customers at library service desks. A desire to help your community, strong communication skills, the ability to work as part of a team, and flexibility are necessary to be successful in this position.

Lifeguard (Hourly)

SALARY \$18.03 Hourly

LOCATION Madison, WI

JOB TYPE HOURLY

JOB NUMBER 2024-00455

DEPARTMENT Parks Division

OPENING DATE 01/17/2025

CLOSING DATE 6/30/2025 11:59 PM Central

COMP. GROUP/RANGE 16/00

City of Madison Lifeguards work in the Aquatics Program to provide front-line safety services at Goodman Pool. They exercise teamwork in keeping the community safe by preventing accidents from occurring and explaining rules, policies, and procedures. Lifeguards maintain a safe, energetic, and welcoming environment for all patrons at Goodman Pool. As needed, lifeguards will perform lifesaving measures.

Maintenance Mechanic 2

SALARY \$31.14 Hourly

\$2,491.30 Biweekly

\$5,397.82 Monthly \$64,773.80 Annually

LOCATION Madison, WI

JOB TYPE PERMANENT FULL TIME

JOB NUMBER 2025-00101

DEPARTMENT Madison Public Library

OPENING DATE 02/28/2025

CLOSING DATE 3/13/2025 11:59 PM Central

COMP. GROUP/RANGE 15/09

As a Maintenance Mechanic 2 you will be responsible for semi-skilled, skilled, or master-level work in the installation, repair, and/or maintenance of mechanical systems, machinery, equipment, and buildings and grounds at the Central Library and its neighborhood libraries. Employees in this classification may perform general maintenance work or specialized work as plumbers, electricians, or heating contractors. This work is independently performed and involves using initiative and judgment in identifying the nature of maintenance problems, completing necessary maintenance and repair tasks in a wide variety of areas, and in developing work methods and procedures. This position will have contact with outside vendors and/ or contractors in completing assigned tasks. Work is characterized by the exercise of independent judgment and discretion in laying out work and in directing lower level employees. Work is performed in accordance with general instructions and procedures and reviewed for overall results.



Monona Terrace Associate Director - Sales, Community and Event Services

SALARY \$50.54 - \$60.85 Hourly \$4,043.02 - \$4,867.89 Biweekly \$8,759.88 - \$10,547.10 Monthly \$105,118.52 - \$126,565.14 Annually

LOCATION Madison, WI

JOB TYPE PERMANENT FULL TIME

JOB NUMBER 2025-00041

DEPARTMENT Monona Terrace Community and Convention Center

OPENING DATE 03/06/2025

CLOSING DATE 3/31/2025 11:59 PM Central

COMP. GROUP/RANGE 18/15

The Monona Terrace Community and Convention Center is looking to hire the next Associate Director! This is highly responsible managerial and professional work as a senior manager for the Monona Terrace Community and Convention Center. The work involves independent supervisory and program administration responsibility for the audio-visual services, sales, marketing, public and community relations, tourism and volunteer services, and event services activities of the Center.

Paint Crew Leadworker

SALARY \$25.18 Hourly

LOCATION Madison, WI

JOB TYPE HOURLY

JOB NUMBER 2025-00003

DEPARTMENT Traffic Engineering Division

OPENING DATE 02/28/2025

CLOSING DATE 3/31/2025 11:59 PM Central

COMP. GROUP/RANGE 16/00

This position oversees seasonal workers performing pavement marking activities (such as painting crosswalks, stop bars, flat and raised islands) throughout the City of Madison. This position assigns and coordinates seasonal crews and equipment. This position reviews completed work, inspects and maintains equipment, and maintains related pavement marking data, maps, and records. Assignments are provided by Leadworkers and performed independently or as part of a crew with limited supervision.

Program Assistant 2

SALARY \$29.64 Hourly \$2,297.22 Biweekly \$4,977.31 Monthly \$59,727.72 Annually

LOCATION Madison, WI

JOB TYPE PERMANENT FULL TIME

JOB NUMBER 2025-00115

DEPARTMENT CDA Housing Operations

OPENING DATE 03/11/2025

CLOSING DATE 3/19/2025 11:59 PM Central

COMP. GROUP/RANGE 17/12

This Program Assistant position serves both the Community Development Authority (CDA) and the Department of Planning Community and Economic Development (DPCED) Office of the Director. As a primary role, this Program Assistant provides coordinated administrative support to CDA housing programs and redevelopment functions. In a closely related role, this position also provides executive administrative support to the Director of DPCED, including administrative support on cross-division projects and initiatives, and coordination of DPCED staff meetings and events.



Streets Attendant (Hourly) - Seasonal*

SALARY \$20.53 Hourly

LOCATION Madison, WI

JOB TYPE HOURLY

JOB NUMBER 2024-00439

DEPARTMENT Streets Division

OPENING DATE 02/04/2025

CLOSING DATE 6/30/2025 11:59 PM Central

COMP. GROUP/RANGE 15/00

The City of Madison is hiring Streets Attendants. The details of each type of Streets Attendant position are listed below. This is entry-level work performed in the Streets Division. This is seasonal work and no work hours are guaranteed.

-A driver's license is NOT required for these positions-

Following the initial round of hiring, applicants who are not selected will remain active on the eligible list and may be referred as vacancies occur throughout the season. Seasonal employees that are in good standing may be asked to return the following year.

The pay rate for this position consists of a base wage of \$18.03 per hour plus a bonus of \$2.50 per hour.

Examples of Duties and Responsibilities

Yardwaste Attendant

Employees perform heavy manual labor, greet the public, perform recordkeeping duties of surveys and weights of the yard waste collected at the site. Inform public of policies and guidelines regarding yard waste. Perform related work as assigned.

Anticipated work hours:

Employees may be scheduled for up to 40 hours per week during the following days/times:

Monday, Tuesday, Thursday 7:15 am - 7:15 pm

Wednesday 2:45 pm - 7:15 pm (Olin Ave only)

Friday 7:15 am - 3:00 pm

Saturday, Sunday 8:30 am - 4:30 pm

Anticipated duration of work: Beginning of April through the end of November.

Equipment Washer

Employees will primarily be responsible for the daily cleaning of the Streets Division's fleet of Street Sweepers as well as other assigned tasks in and around the Streets Division Maintenance shops.

Anticipated work hours:

Monday through Friday, 2:30 pm to 8:30 pm, but hours may vary. Position could be expanded to 40 hours per week.

Anticipated duration of work: Beginning of April through the end of November.

Transportation Planner*

SALARY \$38.17 - \$45.29 Hourly \$2,957.82 - \$3,509.95 Biweekly \$6,408.61 - \$7,604.89 Monthly \$76,903.32 - \$91,258.70 Annually

LOCATION Madison, WI

JOB TYPE PERMANENT FULL TIME

JOB NUMBER 2025-00127

DEPARTMENT Transportation

OPENING DATE 03/12/2025

CLOSING DATE 3/26/2025 11:59 PM Central

COMP. GROUP/RANGE 18/08

This position helps fulfill the mission of our agency by advancing Madison's sustainability, safety, and equity goals through innovative transportation planning initiatives. This role leads the implementation and maintenance of the City's Complete Green Streets policy while supporting other key transportation plans, programs, and policies. By collaborating across departments, engaging with stakeholders, and refining planning processes, this position ensures Madison's transportation system is equitable, efficient, and sustainable. This is professional transportation planning work within the City of Madison's Department of Transportation. This position primarily involves the collection and analysis of transportation data, development of planning documents and visual materials, engagement with diverse and multicultural community members and stakeholders, and providing analysis and recommendations regarding transportation strategies, policies, and programs.



Apply at www.governmentjobs.com/careers/countyofdane

LTE County Park Attendant

SALARY \$22.99 Hourly

LOCATION Madison, WI

JOB TYPE Limited Term Employee

JOB NUMBER 2025-00035

DEPARTMENT Land and Water Resources

OPENING DATE 01/30/2025

FLSA Non-Exempt

BARGAINING UNIT 720

The Dane County Land and Water Resources Department has openings for the LTE County Park Attendant position in Madison, WI.

LTE County Parks Maintenance Crew I

SALARY \$22.99 Hourly

LOCATION Madison, WI

JOB TYPE Limited Term Employee

JOB NUMBER 2025-00172

DEPARTMENT Land and Water Resources

OPENING DATE 03/17/2025

CLOSING DATE 6/1/2025 12:00 AM Central

FLSA Non-Exempt

BARGAINING UNIT 720

Dane County Parks has vacancies for the LTE County Parks Maintenance Crew I position.

Limited Term Employees (LTEs) are limited to 1,200 hours in a payroll year and are not guaranteed any hours per week.

LTE General Laborer (720)

SALARY \$22.98 Hourly

LOCATION Madison, WI

JOB TYPE Limited Term Employee

JOB NUMBER 2025-00118

DEPARTMENT Administration

OPENING DATE 02/03/2025

CLOSING DATE 3/28/2025 11:59 PM Central

FLSA Non-Exempt

Dane County Department of Administration has a vacancy for a LTE General Laborer position. This position will work up to 40 hours per week.

LTE General Laborer (AEC - 65)

SALARY \$29.46 Hourly

LOCATION Madison, WI

JOB TYPE Limited Term Employee

JOB NUMBER 2025-00081

DEPARTMENT Alliant Energy Center

OPENING DATE 01/31/2025

CLOSING DATE Continuous

FLSA Non-Exempt

BARGAINING UNIT 65

LTE General Laborer positions at the Alliant Energy Center are a part of a pool of staff who are used for surge staffing needs. The department maintains an ongoing recruitment for LTE General Laborers in order to hire periodically as additional staff are needed. Supervisors review applications and contact applicants for interviews when there is a need to add LTE staff.



LTE INTERN – ANIMAL CARE

SALARY \$22.94 Hourly

LOCATION Madison, WI

JOB TYPE Limited Term Employee

JOB NUMBER 2025-00115

DEPARTMENT All Departments

OPENING DATE 03/14/2025

CLOSING DATE 3/28/2025 11:59 PM Central

FLSA Non-Exempt

BARGAINING UNIT 720

The Henry Vilas Zoo in Madison, Wisconsin, is currently recruiting for a Limited Term Employee (LTE) Intern – Animal Care position.

LTE Juvenile Court Counselor

SALARY \$33.86 Hourly

LOCATION Madison, WI

JOB TYPE Limited Term Employee

JOB NUMBER 2025-00085

DEPARTMENT Juvenile Court Program

OPENING DATE 01/17/2025

CLOSING DATE 12/31/2025 11:59 PM Central

FLSA Non-Exempt

BARGAINING UNIT 2634

LIMITED TERM EMPLOYMENT OPPORTUNITY WITH NO GUARANTEED HOURS PER WEEK (limit of 1,200 hours per payroll year).

LTE Juvenile Court Worker

SALARY \$32.55 Hourly

LOCATION Madison, WI

JOB TYPE Limited Term Employee

JOB NUMBER 2025-00087

DEPARTMENT Juvenile Court Program

OPENING DATE 01/17/2025

CLOSING DATE 12/31/2025 11:59 PM Central

FLSA Non-Exempt

BARGAINING UNIT 720

LIMITED TERM EMPLOYMENT OPPORTUNITY WITH NO GUARANTEED HOURS PER WEEK (limit of 1,200 hours per payroll year).

LTE Lake Management Dredge Deckhand

SALARY \$22.99 Hourly

LOCATION Madison, WI

JOB TYPE Limited Term Employee

JOB NUMBER 2025-00089

DEPARTMENT Land and Water Resources

OPENING DATE

02/10/2025

FLSA Non-Exempt

BARGAINING UNIT 720

The Dane County Land and Water Resources Department has openings for the LTE Lake Management Dredge Deckhand position in Madison, WI.



LTE Lake Management Harvester Operator

SALARY \$22.99 Hourly

LOCATION Madison, WI

JOB TYPE Limited Term Employee

JOB NUMBER 2025-00091

DEPARTMENT Land and Water Resources

OPENING DATE 02/10/2025

FLSA Non-Exempt

BARGAINING UNIT 720

The Dane County Land and Water Resources Department (LWRD) is accepting applications to develop an eligibility list for Limited Term Employment (LTE) for . This eligibility list is for LTE Lake Management Harvester Operators, LTE Lead Lake Management Barge Operators, LTE Lead Lake Management Harvester Operators and LTE Lake Management Harvester Mechanics.

LTE Lussier Family Heritage Center Attendant – Environmental Education

SALARY \$22.99 Hourly

LOCATION Madison, WI

JOB TYPE Limited Term Employee

JOB NUMBER 2025-00055

DEPARTMENT Land and Water Resources

OPENING DATE 01/30/2025

FLSA Non-Exempt

BARGAINING UNIT 720

The Dane County Land and Water Resources Department has openings for the LTE Lussier Family Heritage Center Attendant – Environmental Education position in Madison, WI.

LTE MEDICOLEGAL INVESTIGATOR

SALARY \$41.61 Hourly

LOCATION McFarland, WI

JOB TYPE Limited Term Employee

JOB NUMBER 2024-00530

DEPARTMENT Medical Examiner

OPENING DATE 11/25/2024

CLOSING DATE 6/1/2025 11:59 PM Central

FLSA Non-Exempt

BARGAINING UNIT 1871

EXAMPLES OF DUTIES

Investigates death scenes, takes telephone reports of deaths where appropriate and reports findings to the pathologist to assist in the determination of Cause and Manner of death in accordance with Wisconsin State Statutes. Examines evidence at scenes to establish an initial assessment of the cause and manner of death natural, suicide, accidental, homicidal or undetermined. Assists in the identification of the decedent by examining the body and the scene of the death, and gathering additional information as needed. Collects and preserves physical evidence in accordance with established chain of custody procedures. Notifies the next of kin personally or in conjunction with law enforcement, judicial agencies, or chaplain services. Supervises and assists with the removal of a decedent from a scene and the transport and accession at the morgue. Obtains personal data and medical history on cases from hospital personnel, health care personnel, and interviews with family, neighbors, friends and others. Testifies in civil and criminal court cases on results of investigations and other expert information. Prepares death certificates for certification by pathologists. Prepares disinterment permits, subpoenas and other legally binding documents for embalming and cremation. Establishes and maintains effective working and public relations with various local and state law enforcement agencies, federal officers, county departments and the public. Assists at select autopsies with photographic duties, collection and documentation of evidence recovered at postmortem examination. Attends select autopsies and participates as required under pathologist's supervision. Performs other duties as required.



LTE MORGUE TECHNICIAN

SALARY \$34.14 Hourly

LOCATION McFarland, WI

JOB TYPE Limited Term Employee

JOB NUMBER 2024-00500

DEPARTMENT Medical Examiner

OPENING DATE 10/28/2024

CLOSING DATE 6/1/2025 12:00 AM Central

FLSA Non-Exempt

BARGAINING UNIT 1871

The Dane County Medical Examiners Office is currently recruiting for a Limited Term Employee (LTE) Morgue Technician position. Limited Term employees are limited to 1,200 hours in a payroll year and are not guaranteed any hours per week.

EXAMPLES OF DUTIES

Assists a Forensic Pathologist in the performance of medico-legal autopsies including opening and closing of the body, assisting with evisceration, assisting with other autopsy procedures, preparing samples for histologic examination; receives /tracks/distributes organs and returned histologic preparations; assists in distribution or acquisition of histologic specimens for review or consultation; maintains the cleanliness and stock histology room; laundry of scrubs, protective gowns, autopsy supplies; cleans reusable PPE such as PAPR equipment, shields, safety glasses/goggles; photography, basic radiology via LODOX x-ray, BODYTOM CT, and portable x-ray devices, collection and documentation of evidence or specimens; coordinates with the Chief Medical Examiner or Forensic Pathologist the scheduling of autopsies including notification to appropriate law enforcement personnel; assists in identification of bodies including assist in obtaining fingerprints, using specialized procedures for decomposed bodies and obtains services of identification experts such as a forensic dentist; registers and inventories all bodies and their personal property; maintains autopsy facility, equipment and supplies in a clean/sanitary condition; prepares bodies for release; releases bodies and property to the appropriate agency, funeral director, or family member and secures a receipt of the transaction; maintains morgue supply inventory including the ordering of supplies; assists in prescription drug inventory and packaging; cleaning of the morgue, accessioning area and laboratory to include Ultraviolet treatments; assists with mass fatality planning and preparation of supplies and resources; may be required to assist with decedent removal or off-site autopsy assistance; assists in disposal of histological specimens in accordance with Departmental policy; provides testimony as to decedent identification, chain of custody and evidence gathered; completes and timely files all morgue related forms and reports.

LTE Usher

SALARY \$19.86 Hourly

LOCATION Madison, WI

JOB TYPE Limited Term Employee

JOB NUMBER 2025-00135

DEPARTMENT Alliant Energy Center

OPENING DATE 02/06/2025

CLOSING DATE 4/7/2025 11:59 PM Central

FLSA Non-Exempt

BARGAINING UNIT 65

The Dane County Alliant Energy Center has three (3) vacancies for Limited Term Employee Usher positions.

Limited Term employees are limited to 1,200 hours in a payroll year and are not guaranteed any hours per week.

DEFINITION

Provide world class customer service to guests attending events at the Alliant Energy Center.

EXAMPLES OF DUTIES

Collect or scan tickets to validate entry for events. Act as a door guard to control access to various areas on the grounds. Check credentials or badges for verification purposes. Assist guests with finding their assigned seats. Maintain an extensive knowledge of the facility and be able to effectively answer guests' questions. Greet and assist guests as they make their way through the various facilities, helping provide an enjoyable experience.



Case Manager (Behavioral Health - Comprehensive Community Services)

SALARY \$33.86 - \$39.52 Hourly

LOCATION Madison, WI

JOB TYPE Full time (1.0FTE)

JOB NUMBER 2024-00554

DEPARTMENT Human Services Department

OPENING DATE 03/14/2025

CLOSING DATE 3/28/2025 11:59 PM Central

FLSA Non-Exempt

BARGAINING UNIT 2634

The Dane County Human Services Department, Behavioral Health division, has a full-time (1.0 FTE) vacancy for a Case Manager (Behavioral Health - Comprehensive Community Services) position in Madison, WI. This current opening is in the Comprehensive Community Services unit.

Community Development Block Grant (CDBG/HOME) Program Specialist - Project

SALARY \$41.61 - \$55.41 Hourly

LOCATION Madison, WI

JOB TYPE Full Time Project Position (1.0FTE)

JOB NUMBER 2025-00160

DEPARTMENT Human Services Department

OPENING DATE 03/07/2025

CLOSING DATE 3/21/2025 11:59 PM Central

FLSA Non-Exempt

The Dane County Department of Human Services has a full time (1.0 FTE) vacancy for a Community Development Block Grant (CDBG/HOME) Program Specialist - Project. This position is contingent on available funding, currently through 9/30/2029.

The Eligible List created from this posting may be used for future vacancies for the next six (6) months.

Facilities Manager

SALARY \$45.01 - \$59.86 Hourly

LOCATION Madison, WI

JOB TYPE Full time (1.0FTE)

JOB NUMBER 2025-00157

DEPARTMENT Administration

OPENING DATE 03/07/2025

CLOSING DATE 3/21/2025 11:59 PM Central

FLSA Exempt

The Department of Administration for Dane County in Madison WI, has a full-time (1.0 FTE) vacancy for a Facility Manager position.

Eligibility List created will be used to fill future vacancies over the next six (6) months.

Lead Juvenile Court Worker

SALARY \$33.75 - \$36.66 Hourly

LOCATION Madison, WI

JOB TYPE Full time (1.0FTE)

JOB NUMBER 2025-00066

DEPARTMENT Juvenile Court Program

OPENING DATE 03/07/2025

CLOSING DATE 3/21/2025 11:59 PM Central

FLSA Non-Exempt

The Dane County Juvenile Detention Center has a current vacancy for a full time (1.0 FTE) Lead Juvenile Court Worker. This position will work Monday - Friday; 11am - 7pm. The Eligible List created from this vacancy may be used to fill vacancies for the next six (6) months.



Part-Time Registered Nurse BPHCC

SALARY \$42.80 - \$51.33 Hourly

LOCATION Verona, WI

JOB TYPE Part Time position (.2FTE)

JOB NUMBER 2023-00601

DEPARTMENT Human Services Department-BPHCC

OPENING DATE 09/29/2023

CLOSING DATE Continuous

FLSA Non-Exempt

The Dane County Department of Human Services (DCDHS) - Badger Prairie Health Care Center (BPHCC) is recruiting for Part-Time Registered Nurses (RNs). Currently DCDHS is hiring 0.2 FTE positions that work every other weekend float shift positions with opportunities to work additional shifts based on individual availability and scheduling needs.

SOCIAL WORKER (BEHAVIORAL HEALTH)

SALARY \$33.86 - \$43.12 Hourly

LOCATION Madison, WI

JOB TYPE Full time (1.0FTE)

JOB NUMBER 2024-00574

DEPARTMENT Human Services Department

OPENING DATE 03/14/2025

CLOSING DATE 3/28/2025 11:59 PM Central

FLSA Non-Exempt

BARGAINING UNIT 2634

The Dane County Human Services Department has a full-time (1.0 FTE) vacancy for a Social Worker I-II Behavioral Health position located within the Comprehensive Community Services (CCS) program in Madison, WI.

SOCIAL WORKER (CYF - CPS ONGOING)

SALARY \$33.86 - \$39.52 Hourly

LOCATION Madison, WI

JOB TYPE Full time (1.0FTE)

JOB NUMBER 2025-00164

DEPARTMENT Human Services Department

OPENING DATE 03/07/2025

CLOSING DATE 3/21/2025 11:59 PM Central

FLSA Non-Exempt

BARGAINING UNIT 2634

The Dane County Department of Human Services, Children, Youth and Families Division has a full-time (1.0 FTE) vacancy for a Child Protective Services Ongoing Social Worker I-II position in Madison, WI.

SOCIAL WORKER (DAS - APS - EAN AAR)

SALARY \$33.86 - \$39.52 Hourly

LOCATION Madison, WI

JOB TYPE Part Time Position (.5FTE)

JOB NUMBER 2025-00109

DEPARTMENT Human Services Department

OPENING DATE 02/14/2025

CLOSING DATE 3/21/2025 11:59 PM Central

FLSA Non-Exempt

BARGAINING UNIT 2634

The Dane County Department of Human Services, Disability and Aging Services division has a part-time (0.5 FTE) vacancy for a Social Worker I position in Madison, WI.



Apply at wisc.jobs

Pharmacy Technician Job ID 16978

Position Summary

As a Pharmacy Technician, you are responsible for packaging, labeling, and distributing medications, drugs and pharmacy supplies to the Institution units. You will also assist with inventory recordkeeping, storage of supplies and general maintenance of pharmacy area.

Salary Information

Pay for the position is \$19.92 per hour, plus excellent benefits. A 12-month probationary period is required.

Pay for current or former state employees will be set based on the rules that apply to compensation for the applicable transaction. This position is classified as a Pharmacy Technician – Objective and is in pay schedule and range 06/11.

Job Details

All applicants who may be appointed to this position will be required to allow DHS to conduct a background check to determine whether the circumstances of any conviction may be related to the job being filled.

All appointees will be required to receive a TB test, which will be administered by MMHI, or medical personnel approved by the facility prior to their start date.

DHS does not sponsor work visas for this position, thus, in compliance with federal law, selected candidates will be required to verify eligibility to work in the United States by completing the required I-9 form upon hire.

Qualifications

Minimum qualifications include all of the following:

- Registration or eligibility to obtain registration as a Pharmacy Technician with the State of Wisconsin Department of Safety and Professional Services (DSPS). Registration must be obtained by the start date. Please see the DSPS website for more information on registration and eligibility.
- 18 years of age by the time of appointment.
- Experience or training using a pharmacy computer system, such as Cerner, PharmNet, Epic, or similar, to conduct order entries and other pharmaceutical duties.
- Experience or training performing medical distributions or using an automated dispensing machine.
- Experience using databases and/or word processing programs.

Well-qualified applicants will also have one or more of the following:

- Experience with inventory management and placing medication orders.
- Experience preparing cassettes for medication distribution.
- Experience working in a psychiatric setting, hospital, or healthcare setting.

For a guide on developing your resume and what should be included, click here.

How To Apply

Applying is easy! Click “Apply for Job” to start your application process. Sign into your account or create an account before applying for the job. Follow the steps outlined in the application process to submit your application.

Helpful Information:

- Once your application is submitted, no changes are allowed. Click “Save” to allow changes to your application as needed before submitting by the deadline.
- You will be required to attach your current resume in a Word or PDF compatible format and answer one or more questions.
- You may want to save a copy of the job posting for referencing after the deadline.
- Please monitor your email for communications related to this position.
- Current or former permanent, classified, state employees must complete the online application process to be considered.
- If viewing through an external site, please apply directly at Wisc.Jobs.
- For technical assistance and general information, please see Frequently Asked Questions. For questions about the position, to request a copy of the full position description, or for other employment inquiries, please contact Shea O'Malley in Human Resources at shea.omalley@dhs.wisconsin.gov.

DHS is an Equal Opportunity and Affirmative Action employer seeking a diverse and talented workforce.

Veterans are encouraged to apply. For complete information on Veterans' hiring programs with the WI Department of Veteran's Affairs, click here.

Deadline to Apply

Applications will be accepted until this position is filled.



Certified Nursing Assistant (CNA) Job ID 14439

Salary Information

Starting pay is between \$25.06 and \$28.16/hour for Objective **OR** \$26.42 and \$29.73/hour for Advanced based on state seniority. Additional increases are based on years of service in the chart below.

<u>Years of State Service</u>	<u>Objective</u>	<u>Advanced</u>
0	\$25.06	\$26.42
1	\$25.58	\$26.97
2	\$26.09	\$27.52
3	\$26.61	\$28.08
5	\$27.12	\$28.63
10	\$27.64	\$29.18
15	\$28.16	\$29.73

- \$.80/hour night differential and \$.80/hour weekend differential applies to worked shifts.
- **\$2,000** sign-on bonus applies to those with no prior state service in the last five years; who stay with CWC in the position until completing probation. Bonus will be split, \$1,000 upon hire and \$1,000 after completing probation.
- A 12-month probationary period is required. The pay schedule and range for an RCT-Objective is 06/11. The pay schedule and range for an RCT-Advanced is 06/12.
- Pay for current or former state employees will be set based on the rule that apply to compensation for the applicable transaction.

Job Details

All applicants who may be appointed to this position will be required to allow DHS to conduct a screening including a background check to determine whether the circumstances of any conviction may be related to the job being filled, TB test, and a physical screening which includes verifying your ability to lift up to 55 lbs., carry, bend, kneel, crawl, twist, and balance.

DHS does not sponsor work visas for this position, thus, in compliance with federal law, selected candidates will be required to verify eligibility to work in the United States by completing the required I-9 form upon hire.

Qualifications

Minimally qualified applicants will have all of the following:

- A valid CNA certification.
- Must be 18 years of age upon hire.
- Attend the required full-time orientation, Monday-Friday during the first 5 weeks of employment.
- Work nights, weekends, holidays, and overtime as needed including staying for the next shift to maintain facility staffing requirements.
- Read, comprehend, and interpret charts/diagrams and policies/procedures.
- Work effectively as a member of a team and interact with others.

Well-qualified applicants will also have one or both of the following:

- Experience providing direct support services to individuals with intellectual disabilities with mental or behavioral disorders.

How To Apply

Applying is easy! Click "Apply for Job" to start your application process. Sign in to your account or click "New User" to create an account before applying for the job. Follow the steps outlined in the application process and submit your application.

Helpful Tips:

- Once your application is submitted, no changes are allowed. Click "Save" to allow changes to your application as needed before submitting by the deadline.
 - You may want to save a copy of the job posting for referencing after the deadline.
 - Submitted materials will be evaluated by a panel of job experts according to the qualifications above.
 - Please monitor your email for communications related this position.
 - Current or former permanent, classified, state employees must complete the online application process to be considered.
 - If viewing through an external site, please apply directly at [Wisc.Jobs](#).
 - For technical assistance and general information, please see [Frequently Asked Questions](#). For questions about the position or for other employment inquiries, please contact Jacque Strook in Human Resources at jacqueline.strook@dhs.wisconsin.gov
- DHS is an Equal Opportunity and Affirmative Action employer seeking a diverse and talented workforce. Veterans are encouraged to apply. For complete information on Veterans' hiring programs with the WI Department of Veteran's Affairs, click [here](#).

Deadline to Apply

Applications will be accepted until positions have been filled.

Applicants are strongly encouraged to allow ample time to finalize their applications keeping in mind that technical assistance is only available Monday through Friday 7:45 am – 4:30 pm. Late or incomplete applications will not be accepted.



Custodian Job ID 16068

Position Summary

As a Custodian, you will be responsible for performing a variety of cleaning and maintenance tasks at MMHI. Duties include, but are not limited to:

- Operating automatic cleaning equipment, such as automatic scrubbers, sweepers, and wall washers, wet/dry vacuums, and carpet cleaning equipment
- Stripping and sealing of floors
- Cleaning toilets, showers, and furniture
- Shoveling snow
- Replacing light bulbs

Salary Information

The starting pay for these positions is \$16.18 per hour, plus excellent benefits. A 12-month probationary period is required. A \$2,000 sign-on bonus applies to those with no prior state service in the last five years who stay with MMHI until completing probation. Bonus will be split, \$1,000 upon hire and \$1,000 after completing probation. Must sign an agreement to remain in the position until completing probation. Employees who do not remain in the position for any reason through the probationary period, must reimburse DHS the sign-on bonus, unless DHS agrees otherwise.

Pay for current or former state employees is set based upon the rules that apply to compensation for the applicable transaction. These positions are in pay schedule and range 03/08.

Job Details

All applicants will be required to allow the DHS to conduct a background check to determine whether the circumstances of any convictions may be related to the job being filled.

All appointees will be required to receive a TB test, which will be administered by MMHI or medical personnel approved by the facility prior to their start date.

These positions have physical requirements which may include but are not limited to lifting up to 50 pounds, standing, climbing, bending, reaching, and twisting. Applicants may be required to pass a physical evaluation to assess these requirements.

DHS does not sponsor work visas for this position, thus, in compliance with federal law, selected candidates will be required to verify eligibility to work in the United States by completing the required I-9 form upon hire.

Qualifications

Minimally qualified applicants will have the following:

- Ability to work scheduled hours as needed, which may include weekends, holidays, early morning or early evenings, and overtime as needed.
- Ability to follow written and oral instructions, and able to accept work assignment changes as needed.
- Ability to follow proper safety standards when using chemical cleaning agents.
- Ability to use cleaning tools and appropriate sanitizing procedures.

For a guide on developing your resume and what should be included, click here.

How To Apply

Applying is easy! Click "Apply for Job" to start the application process. Sign in to your account or click "Register Now" to create an account before applying for the job. Follow the steps outlined in the application process and submit your application.

Helpful Information:

- Once your application is submitted, no changes are allowed. Click "Save" to allow changes to your application as needed before submitting by the deadline.
- You may want to save a copy of the job posting for referencing after the deadline.
- Please monitor your email for communications related to these positions.
- Current or former permanent, classified, state employees must complete the online application process to be considered.
- If viewing through an external site, please apply directly at Wisc.Jobs.
- For technical assistance and general information, please see Frequently Asked Questions. For questions about the position, to request a copy of the full position description, or for other employment inquiries, please contact Shea O'Malley in Human Resources at shea.omalley@dhs.wisconsin.gov.

DHS is an Equal Opportunity and Affirmative Action employer seeking a diverse and talented workforce.

Veterans are encouraged to apply. For complete information on veterans' hiring programs with the WI Department of Veteran's affairs, click here.

Deadline to Apply

Applications will be accepted until all positions are filled.



Food Service Assistant 2 Job ID 14548

Position Summary

As a Food Service Assistant, you will provide portion prepared food items from bulk containers to individual trays, snack bags and bag lunches based on diet. You will also be responsible for:

- Cleaning equipment and utensils
- Assisting with basic food preparation and transportation of food from the Central Kitchen to resident living units
- Cleaning food production equipment
- Storing food supplies
- Performing all custodial, sanitation and related tasks in the Food Service Department

Salary Information

The starting pay is \$17.12 per hour, plus excellent benefits. A 12-month probationary period is required.

A \$2,000 sign-on bonus applies to those with no prior state service in the last five years; who stay with CWC until completing probation. Bonus will be split, \$1,000 upon hire and \$1,000 after completing probation.

Pay for current or former state employees will be set based on the rules that apply to compensation for the applicable transaction. These positions are classified as a Food Service Assistant 2 and are in pay schedule and range 03/09.

Job Details

All applicants who may be appointed to this position will be required to allow DHS to conduct a background check to determine whether the circumstances of any conviction may be related to the job being filled.

All appointees will be required to receive a TB test, which will be administered by CWC or medical personnel approved by the facility prior to their start date.

These positions have physical requirements which may include but are not limited to lifting up to 30 lbs., pushing 100 lb. food carts, climbing ladders, bending, twisting, reaching, kneeling, stooping, standing, sitting and working on feet for extended periods of time. Applicants may be required to pass a physical evaluation to assess these requirements.

DHS does not sponsor work visas for this position, thus, in compliance with federal law, selected candidates will be required to verify eligibility to work in the United States by completing the required I-9 form upon hire.

Qualifications

Minimally qualified applicants will have all of the following:

- Ability to work scheduled hours as needed, which may include weekends, holidays, early morning or early evenings, and overtime as needed.
- Ability to follow written and oral instructions and accept work assignment changes as needed.
- Experience with basic sanitation, hand washing and safety standards in a food service environment.
- Ability to communicate effectively in the English language both verbally and in writing.

Well-qualified candidates will also have the following:

- Previous food service or production experience.

For a guide on developing your resume and what should be included, click [here](#).

How To Apply

Applying is easy! Click "Apply for Job" to start your application process. Sign in to your account or click "New User" to create an account before applying for the job. Follow the steps outlined in the application process and submit your application.

Helpful Tips:

- Once your application is submitted, no changes are allowed. Click "Save" to allow changes to your application as needed before submitting by the deadline.
- You may want to save a copy of the job posting for referencing after the deadline.
- Submitted materials will be evaluated by a panel of job experts according to the qualifications above.
- Please monitor your email for communications related this position.
- Current or former permanent, classified, state employees must complete the online application process to be considered.
- If viewing through an external site, please apply directly at [Wisc.Jobs](#).
- For technical assistance and general information, please see [Frequently Asked Questions](#). For questions about the position, to request a copy of the full position description, or for other employment inquiries, please contact Jacque Strook in Human Resources at Jacqueline.Strook@dhs.wisconsin.gov.

DHS is an Equal Opportunity and Affirmative Action employer seeking a diverse and talented workforce. Veterans are encouraged to apply. For complete information on Veterans' hiring programs with the WI Department of Veteran's Affairs, click [here](#).

Deadline to Apply

Applications will be accepted until all positions are filled.



Custodian Lead Job ID 15935

Position Summary

As the Custodian Lead, you will be responsible for performing a variety of cleaning and maintenance tasks at MMHI. You will direct other custodians responsible for cleaning and maintenance activities. Duties include, but are not limited to:

- Operating automatic cleaning equipment, such as automatic scrubbers, sweepers, wall washers, wet/dry vacuums, and carpet-cleaning equipment
- Mopping, stripping and sealing of floors
- Cleaning toilets, showers and furniture
- Shoveling snow
- Replacing light bulbs

Salary Information

The starting salary is between \$17.12 per hour, plus excellent benefits. A 12-month probationary period is required.

Pay for current or former state employees is set based upon the rules that apply to compensation for the applicable transaction. The pay schedule/range is 03/09.

Job Details

All applicants will be required to allow the DHS to conduct a background check to determine whether the circumstances of any convictions may be related to the job being filled.

All appointees will be required to receive a TB test, which will be administered by MMHI or medical personnel approved by the facility prior to their start date.

This position has physical requirements which may include but are not limited to lifting up to 50 lbs., standing, sitting kneeling, climbing ladders, crawling, and stooping. Applicants will be required to pass a physical evaluation to assess these requirements.

DHS does not sponsor work visas for this position, thus, in compliance with federal law, selected candidates will be required to verify eligibility to work in the United States by completing the required I-9 form upon hire.

Qualifications

Minimally qualified applicants will have both of the following:

- Ability to work weekends, holidays, early mornings, early evenings, and/or overtime may be required as needed.
- Experience using proper cleaning techniques, powered cleaning equipment, and cleaning chemicals.

Well-qualified applicants will also have one or more of the following:

- Experience training, leading, overseeing, or directing staff in the use of proper cleaning techniques, the use of powered cleaning equipment, or cleaning chemicals.
- Experience planning, laying out, and organizing cleaning tasks, projects, and schedules in order to accomplish tasks efficiently.

For tips in developing your resume and what should be included, click [here](#).

How To Apply

Applying is easy! Click "Apply for Job" to start the application process. Sign in to your account or click "Register Now" to create an account before applying for the job. Follow the steps outlined in the application process and submit your application.

Helpful Information:

- Once your application is submitted, no changes are allowed. Click "Save" to allow changes to your application as needed before submitting by the deadline.
- You may want to save a copy of the job posting for referencing after the deadline.
- Please monitor your email for communications related to this position.
- Current or former permanent, classified, state employees must complete the online application process to be considered.
- If viewing through an external site, please apply directly at [Wisc.Jobs](#).
- For technical assistance and general information, please see [Frequently Asked Questions](#). For questions about the position, to request a copy of the full position description, or for other employment inquiries, please contact Shea O'Malley in Human Resources at shea.omalley@dhs.wisconsin.gov.

DHS is an Equal Opportunity and Affirmative Action employer seeking a diverse and talented workforce.

Veterans are encouraged to apply. For complete information on veterans' hiring programs with the WI Department of Veteran's affairs, click [here](#).

Deadline to Apply

Applications will be accepted until filled.



Licensed Practical Nurses Job ID 14764

Position Summary

As an LPN, you are responsible for providing safe and competent nursing cares to persons who have acute and/or chronic conditions with intellectual and developmental disabilities (ID/DD). You will be accountable for providing prescribed medications and treatments, observing for changes in health conditions, following the plan of care and supporting active treatment programs including basic health care and activities of daily living. You will also work collaboratively with nursing and medical staff, interdisciplinary team members, other health care providers, families and guardians.

Salary Information

Starting salary is between \$28.56 and \$36.72/hour (approximately \$59,400 and \$76,300 annually), based on years of licensure. Additional increases are based on years of licensure in the chart below.

<u>Years of Licensure</u>	<u>Pay Rate</u>
0	\$28.56
3	\$30.20
5	\$31.83
7	\$33.46
9	\$35.09
11	\$36.72

- \$.80 /hour night differential and an \$.80 /hour weekend differential applies to worked shifts.
- **\$2,000** sign-on bonus applies to those with no prior state service in the last five years; who stay with the facility in the position until completing probation. Bonus will be split, \$1,000 upon hire and \$1,000 after completing probation.
- 12-month probationary period is required. Pay schedule and range is 06/05.
- Pay for current or former state employees will be set based on the rules that apply to compensation for the applicable transaction.

Qualifications

Minimally qualified applicants will have all of the following:

- Licensure as a Licensed Practical Nurse and eligible to practice in the State of Wisconsin in accordance with the Department of Safety & Professional Services. Eligible is defined as you are currently holding certification as an LPN in another state and are eligible to obtain licensure in the State of Wisconsin by the start date.
- Experience in a healthcare setting providing care to patients.
- Experience working as part of an interdisciplinary team.
- Experience using an electronic health record (EHR) program for documentation.

Well-qualified applicants will also have one or more of the following:

- Experience or training working with individuals with intellectual, developmental, or physical disabilities.
- Experience with medication administration for multiple routes including enteral.
- Experience or training with Intravenous therapy.

The letter of qualifications is limited to one (1) page. For a guide on developing your resume and letter of qualifications and what should be included in these materials, click [here](#).

How To Apply

Applying is easy! Click "Apply for Job" to start your application process. Sign in to your account or click "New User" to create an account before applying for the job. Follow the steps outlined in the application process and submit your application.

Helpful Tips:

- Once your application is submitted, no changes are allowed. Click "Save" to allow changes to your application as needed before submitting by the deadline.
- You may want to save a copy of the job posting for referencing after the deadline.
- Submitted materials will be evaluated by a panel of job experts according to the qualifications above.
- Please monitor your email for communications related this position.
- Current or former permanent, classified, state employees must complete the online application process to be considered.
- If viewing through an external site, please apply directly at [Wisc.Jobs](#).
- For technical assistance and general information, please see [Frequently Asked Questions](#). For questions about the position, to request a copy of the full position description, or for other employment inquiries, please contact Jacque Strook in Human Resources at Jacqueline.Strook@dhs.wisconsin.gov.

DHS is an Equal Opportunity and Affirmative Action employer seeking a diverse and talented workforce. Veterans are encouraged to apply. For complete information on Veterans' hiring programs with the WI Department of Veteran's Affairs, click [here](#).

Deadline to Apply Applications will be accepted until positions have been filled.

Applicants are strongly encouraged to allow ample time to finalize their applications keeping in mind that technical assistance is only available Monday through Friday 7:45 am – 4:30 pm. Late or incomplete applications will not be accepted.



Lots of openings at Porchlight: <https://porchlightinc.org/careers/>

- [Office Coordinator \(Full-time\)](#)
- [Case Manager – VTHP \(Full-time & Part-time\)](#)
- [Case Manager – Safe Haven Shelter \(Full-time\)](#)
- [Case Coordinator \(Full-time\)](#)
- [Maintenance Tech – Porchlight Properties \(Full-time\)](#)
- [Human Resources Intern \(FTE\)](#)

Other Job Opportunities

- [City of Madison Fire Department](#)
- [City of Madison Police Department](#)
- [Public Health Madison & Dane County](#)
- [UW-Madison Jobs](#)
- [Dane County Jobs](#)
- [State of Wisconsin Jobs](#)

Other Employment Sites:

www.jobs2careers.com

www.ziprecruiter.com

www.glassdoor.com

www.careerjob360.com

www.jobcase.com

www.monster.com

www.jobsinmadison.com

www.careerbuilder.com

www.simplyhired.com

www.linkedin.com

www.dice.com

www.findprimejobs.com

www.mdsearch.com

www.joblift.com

www.care.com

www.healthcarejobsite.com

<https://madison365.com/jobs/>

www.cityofsunprairie.com

www.catholiccharitiesofmadison.mitcawm.com

Felon friendly job link:

<https://www.jobsforfelonshub.com/locations/jobs-for-felons-in-madison-wisconsin/>

www.honestjobs.com



Background Friendly Employers:

- 1) *Aprilaire* - <https://careers.aprilaire.com/home> [L] [SEP]
- 2) *Madison-Kipp Corporation* - <https://www.madison-kipp.com/about-us/careers/> [L] [SEP]
- 3) *Bell Laboratories* - <https://www.belllabs.com/careers/> [L] [SEP]
- 4) *OnTrac* - <https://www.ontrac.com/careers/> [L] [SEP]
- 5) *Clack Corporation* - <https://www.clackcorp.com/careers/> [L] [SEP]
- 6) *Evco Plastics* - <https://www.evcoplastics.com/careers> [L] [SEP]
- 7) *Fisher Barton TST* - <https://www.fisherbarton.com/products/engineered-coating-solutions/> [L] [SEP]
- 8) *Placon* - <https://www.placon.com/careers/> [L] [SEP]
- 9) *Amazon* - <https://www.placon.com/careers/> [L] [SEP]
- 10) *Village Hearth Baking* - <https://www.villagehearthbakerycafe.com/hiring-opportunities> [L] [SEP]
- 11) *Colony Brands* - <https://www.colonybrands.com/careers/> [L] [SEP]
- 12) *ShopBop* - <https://www.shopbop.com/ci/v2/careers.html> [L] [SEP]
- 13) *Kwik Trip* - <https://jobs.kwiktrip.com/us/en/search-results> [L] [SEP]
- 14) *Future Foam* - <https://www.futurefoam.com/careers/> [L] [SEP]
- 15) *Wisconsin Foam* - <https://www.wifoam.com/company/join-our-team> [L] [SEP]
- 16) *Lakeshore Recycling Systems* - <https://www.lrsrecycles.com/about/careers/> [L] [SEP]
- 17) *Pelitteri Waste Systems* - <https://www.pelitteri.com/pages/employment> [L] [SEP]
- 18) *Franklin Electric* - <https://www.franklin-electric.com/company/careers/> [L] [SEP]
- 19) *Ho Chunk* - <https://ho-chunknation.com/employment/> [L] [SEP]
- 20) *GSP Companies* - <https://www.gspretail.com/careers/> [L] [SEP]
- 21) *Superior Linens* - <https://healthcarelinensg.com/family-of-companies/superior-health-linens> [L] [SEP]
- 22) *Family Dollar* - <https://careers.dollartree.com/us/en/family-dollar-careers> [L] [SEP]
- 23) *MOD Pizza* - <https://modpizza.com/join-mod-squad/> [L] [SEP]
- 24) *Dollar General* - <https://careers.dollargeneral.com/> [L] [SEP]
- 25) *Ultratec* - <https://www.ultratec.com/careers/> [L] [SEP]
- 26) *Stoughton Trailers* - <https://www.stoughtontrailers.com/stoughton-trailers-experience> [L] [SEP]
- 27) *Schoeps* - <https://schoepsicecream.com/> [L] [SEP]
- 28) *Findorff* - <https://www.findorff.com/careers/> [L] [SEP]
- 29) *Windsor Building* - <https://www.windsorbuilds.com/careers-at-windsor-building-systems/> [L] [SEP]
- 30) *Frank Productions* - <https://www.frankproductions.com/employment> [L] [SEP]
- 31) *Canteen* - <https://www.canteen.com/find-your-canteen/madison/> [L] [SEP]
- 32) *UPS* - <https://www.jobs-ups.com/> [L] [SEP]

Madison Public Library - www.madisonpubliclibrary.org

Madison Public Library - Pinney

Address: 516 Cottage Grove Rd, Madison, WI 53716

Phone: (608) 224-7100



Employment

1819 Aberg Avenue ■ Madison, WI 53704-4201

& Training Association, Inc.

(608) 242-7402

Madison Public Library - Hawthorne

Address: 2707 E Washington Ave, Madison, WI 53704

Phone: 608-246-4548

Madison Public Library - Lakeview

Address: 2845 N Sherman Ave, Madison, WI 53704

Phone: 608-246-4547

Madison Public Library - Central

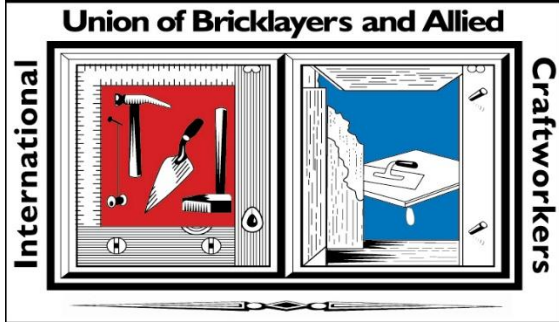
Address: 201 W Mifflin St, Madison, WI 53703

Phone: 608-266-6357

Madison Public Library - Monroe Street

Address: 1705 Monroe St, Madison, WI 53711

Phone: 608-266-6390



Is your Wisconsin criminal record hurting your job search? Did you know that you may be eligible to have certain convictions expunged or certain arrests removed from your record? Do you live in Dane County?

The Urban League of Greater Madison, Legal Action of Wisconsin, Foley & Lardner, LIFT Wisconsin, and the Wisconsin Association of African American Lawyers are holding our next free Expungement Clinic on April 17. Click the buttons below to reserve your slot!

At the clinic, you will receive:

- FREE criminal record reviews with an attorney.
• Advice regarding your eligibility for arrest removal and correction, expungement, and pardon.
• Assistance with paperwork and filing court documents IF eligible.
• Information about your rights related to employment and criminal records.
• Advice for answering job application and job interview questions about your background.
• Job leads & information about FREE career training opportunities.

PRE-REGISTRATION IS REQUIRED

Space is limited, so we encourage you to sign up right away.

Urban League Center for Workforce & Economic Development
2222 S. Park Street, Madison, WI 53713

Or call (608) 729-1200 to register



**MASONRY
PRE-JOB
INFORMATION**

Thank you for showing interest in a career opportunity with the Bricklayers & Allied Craft workers (BAC). We are always looking for talented individuals with experience, however, if you have the drive, determination and are willing to put forth the effort, we will be happy to assist and **train you for free!!! You are not paid while taking this training.** The following list shows our requirements:

1. High School Diploma/GED/HSED
2. Valid Driver's License
3. Passing grade on an Accuplacer Test: 220 math, 240 reading or ACT test: 14 math, 15 reading.
4. Commit **3** Weeks to learn beginning Bricklaying Skills (*from 7:00am to 3:30pm*)
5. Have a positive attitude
6. Physically capable
7. **LOOKING FOR A CAREER NOT JUST A JOB!!!**

With these minimum requirements, you are on your way to earning family sustaining wages. Wages start at over \$25.00/hour for an Apprentice, Pension/401k, Healthcare and Training – everything you need to ensure a secure financial future for yourself and your family.

APPLICATION DEADLINE: June 11th, 2025. Don't wait, Limited Class Size!

CLASSES START: June 16th, 2025

CLASS END DATE: July 3rd, 2025

CLASS LOCATION: 2102 East Spring Drive Madison, WI 53704

Applications will only be accepted by e-mail or telephone!

*****If you have any questions on Apprenticeship opportunities contact:**

Apprenticeship Instructor - Troy Buchholz

Phone- (715) 577-0000

Email: Troybuchholzintef@gmail.com

Any other questions please contact: Frank Andreas 920-238-2189 or Tobin Boyle 262-424-2722 or scan QR code to find out more information or your local BAC representative, Thank you.

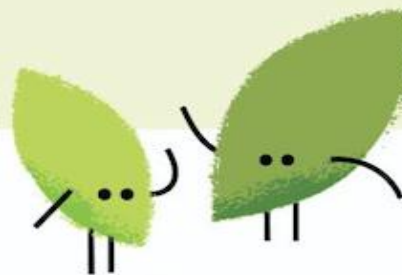


Featured Employer Seminar

Join us for a career event with Agrace



Urban League of Greater Madison



Wednesday, March 19

4 p.m. – 6 p.m.

Urban League, 2222 S. Park St., Room 101

Agrace, a leading local health care employer, invites you to a Featured Employer Seminar hosted in partnership with the Urban League of Greater Madison.

Why Attend?

- Learn about CNA, caregiver, and non-clinical job opportunities at Agrace
- Meet with recruiters, managers, and staff to explore your career potential
- Be a vital part of caring for people during their final months of life

Agrace is committed to:

- Offering competitive pay starting at \$17.50/hr+ based on experience
- Supporting your career development
- Fostering a workplace that values employee feedback



Questions?

Contact Noah Myers at noah.myers@agrace.org or Stephaney Obi at sobi@ulgm.org



Scan the QR code to RSVP





CAREGIVERS, CNAS, LPNS AND RNS TO BE PART OF TRANSFORMING THE CULTURE OF CARE

BENEFITS

- Competitive pay
Tuition reimbursement up to \$5,000
Referral bonuses
Fully paid CBRF training
Medical and dental insurance
401k benefits
Team Member Dreams Program
....and more!

OUR LOCATIONS

Beloit | Brookfield | Clinton | Eau Claire
Fox Point | Kenosha | Manitowoc | Monroe
Mukwonago | Oak Creek | Oconomowoc
Oshkosh | Sheboygan | Stoughton | Verona
Wausau | Palliative Care & Hospice

WHY AZURA

At Azura, we offer more than a job—we offer purpose. Join a team that values compassion, growth, and work-life balance. With a supportive culture, career advancement opportunities, and a mission to make every moment matter, Azura is where you can truly make a difference.



READY TO START YOUR DREAM CAREER? APPLY NOW!





Pave the Way to a Successful Career!

Dane County Highway Department Internship & CDL Training Info Session



The Latino Academy of Workforce Development, Inc., in collaboration with the Urban League of Greater Madison, is excited to share an opportunity that can help you start a new career in highway maintenance and construction.

The Dane County Highway Internship provides:

- ⊖ Six months of paid, hands-on training in road maintenance and construction
- ⊖ Guidance from experienced professionals
- ⊖ A clear path to full-time employment with Dane County Highway

Don't Have a CDL? We've Got You Covered

You may be eligible to enroll in the Latino Academy Truck Driving Training Center's free CDL Training Program.

Limited Spots Available!

RSVP today to secure your spot.

A Commercial Driver's License (CDL) is required to work for Dane County Highway.

Date: Thursday, March 6, 2025
Location: Latino Academy of Workforce Development
 2909 Landmark Pl, Madison, WI 53713
Time: 5:00 PM - 6:00 PM



New Free Tax Filing Options:



Direct File Wisconsin

Filing your taxes using Direct File and WisTax is as easy as 1-2-3:

1. Check to see if you are eligible and register at directfile.irs.gov.
2. File your federal return.
3. File your Wisconsin return.

Direct File and WisTax: *Simple, Secure, Free*

Eligible Wisconsin taxpayers can use Direct File, a no-cost IRS program that offers safe and secure electronic filing via a mobile-friendly platform. Best of all, Direct File offers a seamless connection with WisTax, a free alternative for Wisconsin residents to file their state taxes.

Direct File is quick, intuitive, and user-friendly. The verified information from your federal return is automatically imported to WisTax, eliminating the need to complete W-2s, 1099s, and additional

forms twice. Not only does this save you time; it lowers the likelihood of errors, making it among the fastest refund options available. Instant confirmation ensures your return was received.

If Direct File and/or WisTax is not an option for you, there are other free options, such as the Volunteer Income Tax Assistance (VITA) and Tax Counseling for the Elderly (TCE) programs and the IRS Free File Alliance. To get help or find more information on Direct File, go to the IRS Direct File website. For WisTax, visit the Wisconsin Department of Revenue website.

Direct File and WisTax Benefits:

- **Free** - Direct File and WisTax are always completely free.
- **Quick** - Takes about 15 minutes to complete.
- **Simple** - Easy step-by-step process.
- **Seamless** - Information is shared between Direct File and WisTax.
- **Fast refund** - Among the fastest refund possible when using direct deposit.
- **Safe and Secure** - File directly with us on our secure servers. Instant confirmation assures your return was received.



Contact Us
 (608) 266-2486 | DORIncome@wisconsin.gov





Job Fair

Thursday, April 17th, 2025

12:30pm Set Up

1pm to 3pm Job Fair

3pm-4pm Pack Up

Dane County Job Center

1819 Aberg Ave Madison 53704

Room CR 10A

Cost \$50 per booth up to 15 employers (All revenue collected will go towards covering the cost of our events)

To register follow this link [Business Services — SCWIJobs](#)

Please email WDA10BusinessServices@dwd.wisconsin.gov for additional information or if you need help getting registered.

We will have a ***Job Seeker Preparation Area*** open from 8am to 4:30pm at the Job Center. Job Seekers can meet with Job Service staff to review resumes and there will be computers and a printer available to use to print resumes or apply for positions.



An equal opportunity employer/service provider. Auxillary Aids and services are available upon request to individual with disabilities. If you need this printed material intepreted to a language you understand or in a different format, or need assistance in using this service, please contact us:608-405-4400. Deaf, hearing or speech impaired callers may us by the Wisconsin Relay number 711.



Thursday, March 20, 2025

12:30pm Set Up

1pm to 3pm Job Fair

3pm-4pm Pack Up

Dane County Job Center

1819 Aberg Ave Madison 53704

Room CR 10A

Cost \$50 per booth up to 15 employers (All revenue collected will go towards covering the cost of our events)

To register follow this link [Business Services — SCWIJobs](#)

Please email WDA10BusinessServices@dwd.wisconsin.gov for additional information or if you need help getting registered.

We will have a **Job Seeker Preparation Area** open from 8am to 4:30pm at the Job Center. Job Seekers can meet with Job Service staff to review resumes and there will be computers and a printer available to use to print resumes or apply for positions.



An equal opportunity employer/service provider. Auxillary Aids and services are available upon request to individual with disabilities. If you need this printed material intepreted to a language you understand or in a different format, or need assistance in using this service, please contact us:608-405-4400. Deaf, hearing or speech impaired callers may us by the Wisconsin Relay number 711.



Portage Area Job Fair

When: Wednesday, March 19, 2025
1pm to 3pm

Where: Portage High School
301 E Collins St, Portage, WI 53901

Meet with up to 35 employers from the Portage & surrounding area.

- * **Bring your resume**
- * **Dress for success**
- * **Be interview ready**

***If you would like your resume reviewed prior to this event, email us your resume by 3/12/2025: DETBSRRWDA10@dwd.wisconsin.gov Please indicate the event you are requesting your email be reviewed for.



A proud partner of the American Job Center® network

An equal opportunity employer/service provider. Auxillary Aids and services are available upon request to individual with disabilities. If you need this printed material intepreted to a language you understand or in a different format, or need assistance in using this service, please contact us: 608-405-4400. Deaf, hearing or speech impaired callers may us by the Wisconsin Relay number 711.



**YWCA MADISON'S
COMMUNITY
PROFESSIONAL
CLOTHING
CLOSET**

HOURS OF OPERATION

- Open by appointment Only**
- Mondays 2:00 - 4:00pm
 - Wednesday 1:00 - 4:00pm
 - Friday 10:00 - 12:00pm

SCHEDULE TIME

To schedule a *donation* or to make an appointment to 'Shop' the closet. Contact **Aurealia Johnson** via email.

Our closet is still in need of more men's professional wear!



Aurealia Johnson



2040 S. Park Street



ajohnson@ywcamadison.org



Community Health Worker Drop in Hours

with CHW Nicky Powell

Wednesdays
10:00 am - 12:00 pm
Sun Prairie Public Library
Discussion Room #1

No appointment needed, come as you are for resource navigating:

- Food/Meal Programs
- Clothing
- Rent Assistance/Housing
- Transportation Assistance
- Early Childhood Education
- Healthcare & Mental Health
- Employment
- Recreation Services
- Public Library Services
- Community Education
- Voting/Voter Registration
- City Council, Board & Commission Meetings
- Home Visiting Services
-and more!

Navigators@cityofsunprairie.com



SUN PRAIRIE
PUBLIC LIBRARY

NEIGHBORHOOD
NAVIGATORS
Sun Prairie, WI



Looking for a Rewarding Career? Consider Construction!

Get started with hands-on, pre-apprenticeship training taught by industry experts (training may be paid if you complete the competencies). By completing this program, you'll have the opportunity to begin your career as a commercial carpenter, with starting wages of \$27+/hour and great benefits. Here's your chance to launch a career with nationally-recognized professional credentials!



MINIMUM REQUIREMENTS

- 18 years or older (17-year-olds can participate as long as they do not start their apprenticeship before the age of 18).
- Driver's license and consistent means of transportation.
- High School Diploma or GED
- Ability to perform physically demanding work.
- Commitment to attend all classes – perfect attendance is required.

Interviews will take place the week of March 10, 2025. Classes are 4:00-8:00pm, Monday-Thursday beginning March 24 and ending April 17, 2025.

Interested? Call or Email Bill Clingan for more information: 608-246-4351; bill.clingan@uwdc.org.



Greater Wisconsin Carpenters Training Institute



United Way
of Dane County



The Power of Caring. Working for All.

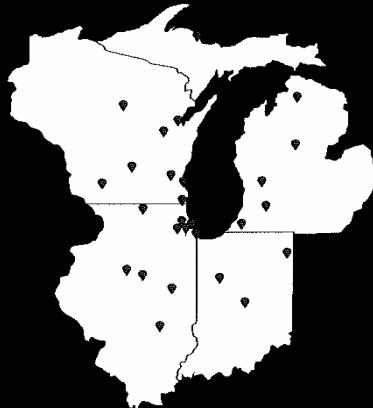


CAREER OPPORTUNITIES

- Diesel Mechanic
- Service Advisor
- Shop Helper
- Working Foreman
- Service Manager
- Detailer
- New & Used Truck Sales
- Parts Manager
- Parts Counter
- Outside Parts Sales
- Parts Delivery Driver
- Warehouse Coordinator

Locations We Serve

WISCONSIN
ILLINOIS
INDIANA
MICHIGAN



The largest contiguous family-owned heavy and medium duty truck dealer in the Upper Midwest

Apply Today
jxe.com/careers



Let's Talk Benefits

Insurance:

- Medical Insurance (HSA & FSA available)
- Dental Insurance
- Vision Insurance
- Accident & Critical Illness Insurance
- Group Term Life Insurance (100% paid by JX)
- Short and Long-Term Disability (100% paid by JX)

Paid Time Off:

- 3 Weeks PTO
- 7 Paid Holidays
- Volunteer Time-Off
- Paid Maternity/Paternity Leave
- Bereavement/Funeral

** Located in DeForest, WI*

Compensation:

- Competitive Pay
- 401k With Company Match

Other:

- Rigorous six-month experiential training program to develop future JX sales associates

JXHRCOF0723





Employment

1819 Aberg Avenue ■ Madison, WI 53704-4201

& Training Association, Inc.

(608) 242-7402

We're Hiring!

Great Teams Start With Good Chemistry

CHEMICAL CO.

HYDRITE

- Drivers
- Chemists
- Cost Admin
- Warehouse
- Utility Operators
- Production Operators
- Product Quality Manager
- Chemical Service Technician
- Product Regulatory Manager
- Food Sales Account Managers
- Regional Transportation Manager
- Industrial Sales Account Managers
- Buyer & Warehouse/Inventory Coordinator

www.hydrite.com/careers

Located in Cottage Grove, WI



Employment

1819 Aberg Avenue ■ Madison, WI 53704-4201

& Training Association, Inc.

(608) 242-7402

JOIN OUR TEAM!

- Earn top wages
- Training Provided
- Flexible Scheduling
- Earn big tips!
- Excellent Growth Opportunities
- Part-Time & Full-Time Positions

EARN UP TO **\$30**
per hour!



SCAN ME

Badger Brothers Moving

Because Great People make Great Movers

Check us out on:   



2025 WDA10 BUSINESS SERVICES EVENT PLAN

DATE & TIME	EVENT	LOCATION
January 16 th 1pm to 3pm	Dane County Job Fair	Dane County Job Center Madison, WI
February 19 th 1pm to 3pm	Jefferson County Job Fair	Jefferson Workforce Center Jefferson, WI
February 11 th TBD	Madison Media Partners Job Fair	Madison Location TBD
March 20 th 1pm to 3pm	Dane County Job Fair	Dane County Job Center Madison, WI
March TBD	Portage Job Fair	Portage High School Portage, WI
April 17 th 1pm to 3pm	Dane County Job Fair	Dane County Job Center Madison, WI
April 23 rd 1pm to 3pm	Jefferson County Job Fair	Jefferson Workforce Center Jefferson, WI
April TBD	Baraboo/Sauk County Job Fair	TBD
May 15 th 1pm to 3pm	Dane County Job Fair	Dane County Job Center Madison, WI
June 18 th 1pm to 3pm	Dane County Job Fair	Dane County Job Center Madison, WI
June 25 th 1pm to 3pm	Jefferson County Job Fair	Jefferson Workforce Center Jefferson, WI
August 21 st 1pm to 3pm	Dane County Job Fair	Dane County Job Center Madison, WI
September TBD	Madison Media Partners Job Fair	TBD
September 18 th 1pm to 3pm	Dane County Open House Event	Dane County Job Center Madison, WI
September TBD	Jefferson County Open House Event	Jefferson Workforce Center Jefferson, WI
September TBD	Skilled Trades Showcase with Madison College-Portage	Portage Enterprise Center Portage, WI
Oct TBD	Manufacturing Job Fair	TBD – Fort Atkinson
October 16 th 1pm to 3pm	Manufacturing Job Fair	Dane County Job Center Madison, WI
November 20 th 1pm to 3pm	Dane County Job Fair	Dane County Job Center Madison, WI

All events are subject to change.

Go to Job Center of Wisconsin, Workforce Events to access flyers and links to register for these events. Registrations for the events will be opened 30 days prior to each quarter.

<https://wisconsinjobcenter.org/events/>

For more information about any of these events, please contact:
WDA10 Business Services Team
 Jennifer Brikowski – 608-405-4404 Aimee Shull 608-405-4407
 Tara Fogo 608-354-0134 Alex Vellender 920-674-7500
 Carrie McTaggart 608-405-4531
WDA10BusinessServices@dwd.wisconsin.gov

E&T

Employment

1819 Aberg Avenue ■ Madison, WI 53704-4201

& Training Association, Inc.

(608) 242-7402



Urban League of Greater Madison

CHILD SUPPORT LEGAL RESOURCE CLINIC



Register Today!



SCAN ME!



<http://tinyurl.com/ChildSupportClinic>

The Child Support Legal Resource Clinic is your connection to tackling child support concerns, resolving custody and placement questions, drivers license recovery assistance, connections to fatherhood support groups and employment services.



LIFT WISCONSIN
Legal Interventions for Transforming Wisconsin



EVERY 3RD FRIDAY IN 2025

1:00 pm - 3:00 pm



Urban League of Greater Madison

2222 S. Park St.

Jan. 17, Mar. 21, May 16,
Jul. 18, Sep. 19, Nov. 21

Questions?

Contact: 608-729-1200

Southwest Madison Employment Center

1233 McKenna Blvd.

Feb. 21, Apr. 18, Jun. 20,
Aug. 15, Oct. 17, Dec. 19

Owe Child Support?

CHILDREN FIRST offers you:

- Job leads and employment search assistance
- Resume preparation assistance
- Classroom training and access to computers
- Transportation assistance and supportive services
- Referrals to other services and training programs

Call (608) 438-4251

This program helps participants and their children with:

Stability Shelter Food & Clothing Education & Training
 An Opportunity to Participate & Improve Their Lives

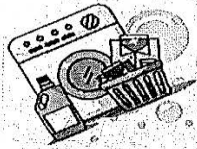


Employment & Training Association

Promoting Self-Sufficiency Through Employment & Training

E&T

E&T



LAUNDRY LOVE

FREE LAUNDRY SERVICE



NHCC will only be offering Laundry Love once month on the first Thursday of the month. We will no longer hold a second program in the morning.

Mound St. Laundromat - 1306 Mound St.

2025 Dates

- Thu. Jan 2 6-8pm
- Thu. Feb 6 6-8pm
- Thu. Mar 6 6-8pm
- Thu. Apr 3 6-8pm
- Thu. May 1 6-8pm
- Thu. June 5 6-8pm
- Thu. Jul 3 6-8pm
- Thu. Aug 7 6-8pm
- Thu. Sep 4 6-8pm
- Thu. Oct 2 6-8pm
- Thu. Nov 6 6-8pm
- Thu. Dec 4 6-8pm

Provided by Neighborhood House Community Center

info@neighborhoodhousemadison.org | 608-255-5337

Laundry payment and detergent provided for up to three loads!
No sign up, open to all!